

# **Installing and Configuring Oracle 10g**

for the ETM<sup>®</sup> System



# Contents

<b>Installing the Oracle 10g Software</b>	<b>1</b>
Installing and Configuring Oracle 10g for the ETM <sup>®</sup> System .....	1
Installing Oracle 10g Enterprise Edition.....	1
Adding ActivePerl to Your System PATH.....	5
Running the Oracle Database Configuration Script.....	6
Sample output of running oracle_install.pl.....	6
Create a TNS Listener .....	10
Creating a TNS Listener Password.....	13
Where to Go From Here .....	14
Install the Oracle Client Tools.....	14
Edit the tnsnames.ora File .....	20
Connect with the ETM <sup>®</sup> Database Maintenance Tool.....	21



# Installing the Oracle 10g Software

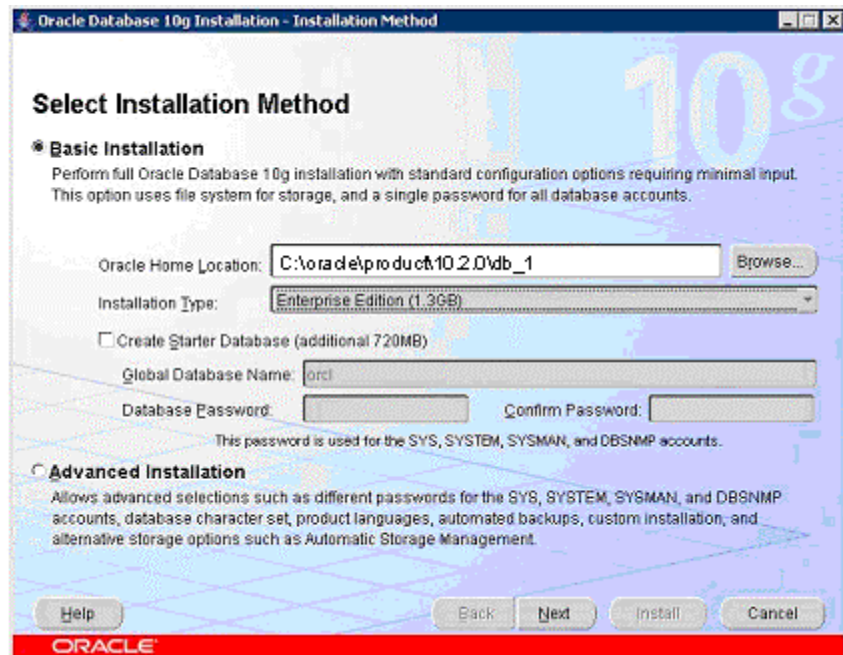
## Installing and Configuring Oracle 10g for the ETM<sup>®</sup> System

This document explains how to install the Oracle 10g software on Solaris or Windows and then run the Perl scripts to prepare the 10g database for use with the ETM<sup>®</sup> System.

### Installing Oracle 10g Enterprise Edition

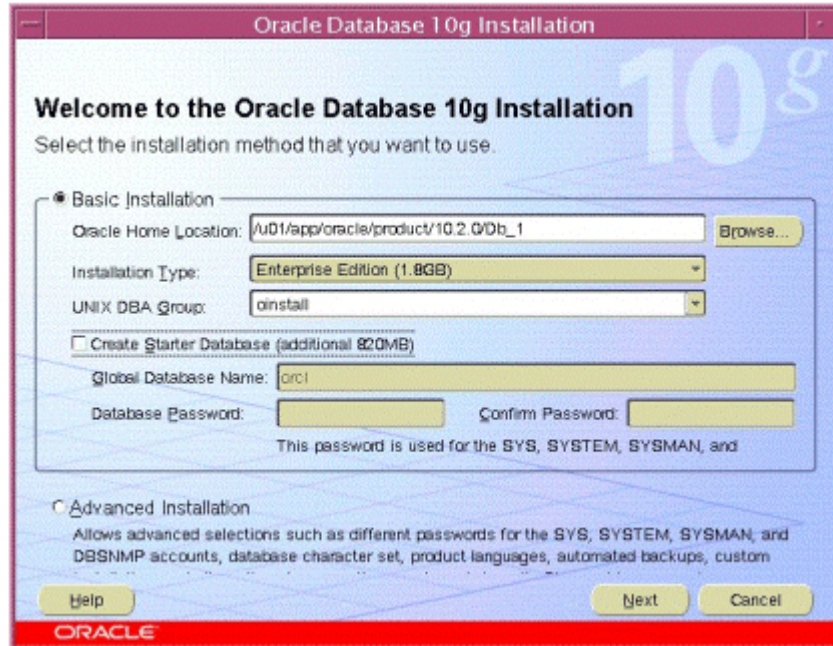
#### To install the software

1. Start the Oracle 10g software installer:
  - On Windows, execute **setup.exe**. The **Select Installation Method** dialog box appears, as shown below.



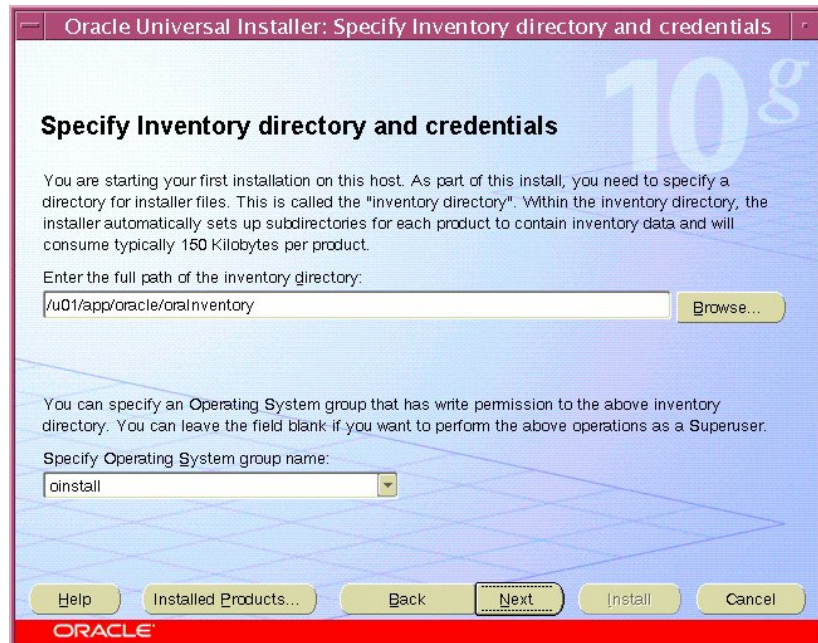
*Select Installation Method dialog box on Windows*

- On Solaris, execute **runInstaller** from a shell. The **Select Installation Method** dialog box appears, as shown below.

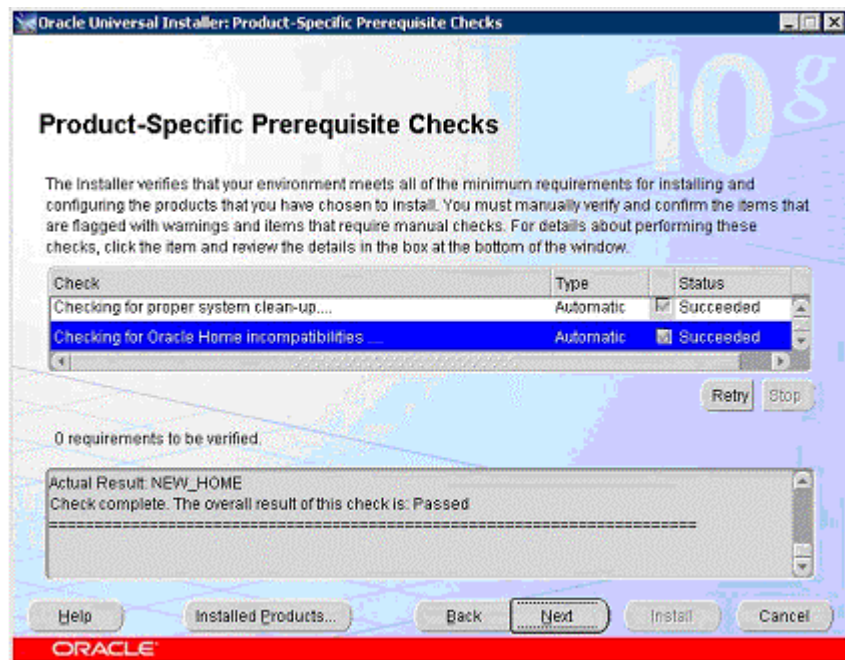


*Select Installation Method dialog box on Solaris*

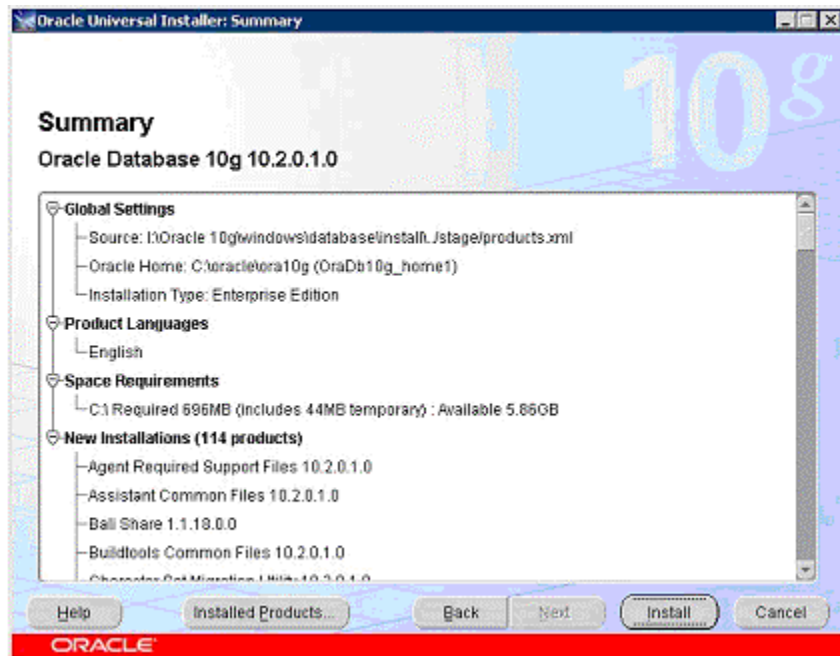
2. Do the following:
  - a. Select **Basic Installation**.
  - b. Choose a location for Oracle Home.
    - On Windows, the default is **C:\oracle\product\10.2.0\db\_1**.
    - On Solaris, the default is **/u01/app/oracle/product/10.2.0/Db\_1**.
  - c. In the **Installation Type** box, select **Enterprise Edition**.
  - d. Clear **Create Starter Database**.
  - e. (*Solaris only*) Select the correct Unix DBA Group.
3. Click **Next**.
4. On Solaris only, the specify **Inventory Directory and Credentials** dialog box appears. Verify the inventory directory and the operating system group and then click **Next**.



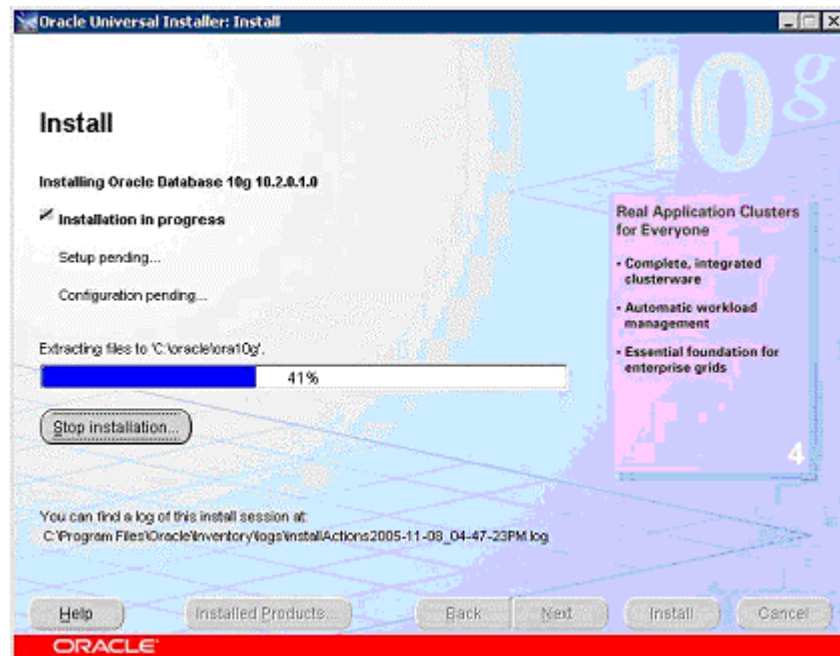
5. The **Product-Specific Prerequisite Checks** dialog box appears.



6. If no problems were found during the prerequisite checks, click **Next**. The **Summary** dialog box appears reflecting the settings you chose.

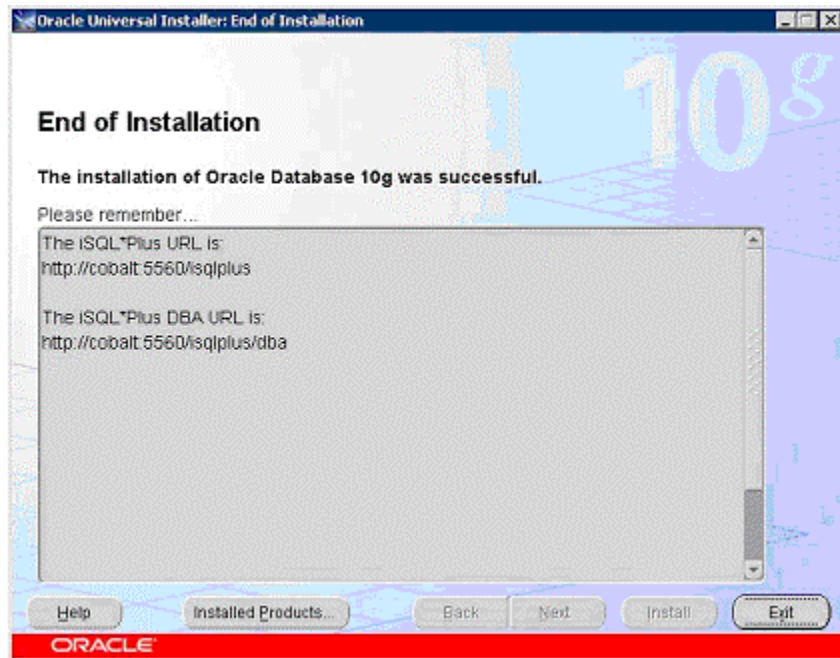


7. Click **Install**. The **Install** dialog box appears.



8. When installation is complete, click **Next**. The **End of Installation** dialog box appears.





9. Make note of the URLs shown and then click **Exit**.

### ***Adding ActivePerl to Your System PATH***

Active Perl is used to run the database creation and configuration scripts. Oracle 10g (Enterprise and Standard) includes a version of Active Perl with the installation.

**IMPORTANT** Be sure that the ActivePerl "bin" directory is in your system PATH variable.

- During Windows installation, you are prompted to allow the installer to modify the PATH, which is selected by default.
- For Solaris, after installation, either edit your environment configuration to permanently add the "bin" directory to your PATH, or add it temporarily as follows:

#### **If your shell is Bash:**

```
> export PATH=$PATH:/usr/local/ActivePerl-5.6/bin
```

#### **If your shell is SH or csh:**

```
> setenv PATH $PATH:/usr/local/ActivePerl-5.6/bin
```

**To test whether the "bin" directory is in your path, at the prompt, type**

```
> perl -version
```

If your PATH is set correctly, the Perl version information is displayed.

## Running the Oracle Database Configuration Script

### To run the database creation and configuration script

1. From a command prompt, change to the ETM scripts directory:  
**<INSTALL\_DIR>\scripts\Oracle.**
2. At the prompt, type: **oracle\_install.pl**
3. Follow the onscreen prompts.
  - Some prompts provide default values that you can accept by pressing ENTER. These are denoted by square brackets.
  - Example input is denoted by parenthesis. You must type a value for these items; no default values are provided.

### Sample output of running oracle\_install.pl

```
C:\Program Files\SecureLogix\ETM\scripts\Oracle>
perl oracle_install.pl
```

```
SecureLogix Corporation's DB Creation Utility
Version: 2.0
```

```
Please enter your OS Type (DOS/UNIX) [DOS]:
Please enter your Domain Name (securelogix.com):
securelogix.com
securelogix.com - Is this correct? (y/n) [n]: y
Please enter your Host Address [10.1.1.128]:
10.1.1.128 - Is this correct? (y/n) [n]: y
Please Enter the value for ORACLE_BASE
(C:\Oracle\): c:\oracle\
Are you sure you want to set ORACLE_BASE to
c:\oracle\? (y/n): y
Please Specify the Oracle version. (8, 9, or 10):
10
Set ORACLE_HOME to: 'c:\oracle\Ora10g\'? (y/n)
[y]:
Please Specify the Oracle version. (9 or 10): 10
Set ORACLE_HOME to: 'c:\oracle\Ora10g\'? (y/n)
[y]: y
Set ORACLE_DATA to: 'c:\oracle\oradata\'? (y/n)
[y]: y
Please Enter the value for ORACLE SID: etm10g
```

```

etm10g - Is this correct? (y/n) [Y]: y
Please enter the listener port for Oracle [1521]:
1521 - Is this correct? (y/n) [y]: y
Creating Data Directories for SID: etm10g
Attempting to create directory:
c:\oracle\admin\etm10g\ ...Success.
Attempting to create directory:
c:\oracle\admin\etm10g\adhoc\ ...Success.
Attempting to create directory:
c:\oracle\admin\etm10g\arch\ ...Success.
Attempting to create directory:
c:\oracle\admin\etm10g\bdump\ ...Success.
Attempting to create directory:
c:\oracle\admin\etm10g\cdump\ ...Success.
Attempting to create directory:
c:\oracle\admin\etm10g\create\ ...Success.
Attempting to create directory:
c:\oracle\admin\etm10g\exp\ ...Success.
Attempting to create directory:
c:\oracle\admin\etm10g\pfile\ ...Success.
Attempting to create directory:
c:\oracle\admin\etm10g\udump\ ...Success.
Attempting to create directory:
c:\oracle\oradata\etm10g\ ...Success.
Would you like the script to create the orapwd
file? (y/n) [y]: y
Would you like the script to modify the
listener.ora file? (y/n) [y]: y
Would you like the script to modify the
tnsnames.ora file? (y/n) [y]: y
Would you like to create the init.ora file for
this database? (y/n) [y]: y
Would you like the script to create the Database
Service for NT? (y/n) [y]: y
Instance created.
Would you like to generate the Oracle scripts to
generate the database? (y/n) [y]: y
Please enter the preferred Tablespace name [ETM]:

```

```

Please enter the ETM User name [etmuser]:
Please specify the password for the ETM User:
<password>
Please re-enter the password for the ETM User:
<password>
Create Database Sql script written to:
c:\Oracle\admin\etm10g\create\create_db_etm10g.sql

These scripts contain the details of how the
database will be created.  If you would like to
configure the tablespaces, redo files, rollback
segments, or other parameters, please modify this
file before running it.

Would you like to run the Oracle scripts to
generate the database? (y/n) [y]: y

Please enter the password for database user
'sys':<password>

c:\Oracle\Ora10g\bin\sqlplus
"sys/change_on_install AS SYSDBA"
@c:\Oracle\admin\etm10g\create\create_db_etm10g.sq
l

SQL*Plus: Release 10.2.0.1.0 - Production on Fri
Oct 27 08:22:58 2006

Copyright (c) 1982, 2005, Oracle.  All rights
reserved.

Connected to an idle instance.

SQL>
SQL> REM * Actually starts the database instance
SQL> startup nomount
pfile="c:\Oracle\admin\etm10g\pfile\init.ora"

...
SQL>
SQL>
SQL> spool off
SQL> EXIT

```

Disconnected from Oracle Database 10g Enterprise  
Edition Release 10.2.0.1.0 - Production

With the Partitioning, OLAP and Data Mining  
options

Database creation script executed. Verify output  
and press 'y' to continue (y/n) [y]:

Would you like to generate the initialization  
script that needs to be run by sys? (y/n) [y]: y

Sys Init Sql script written to:

c:\Oracle\admin\etm10g\create\sys\_init\_etm10g.sql

Would you like to run the 'sys db init' scripts to  
initialize the database? (y/n) [y]: y

Depending on the system, this script may require  
up to 30 minutes to complete. Please be patient.  
To verify script is running, you can check the log  
file at:

c:\Oracle\admin\etm10g\create\sys\_init\_etm10g.log  
and make sure data is being written to file.

c:\Oracle\ora10g\bin\sqlplus

"sys/change\_on\_install AS SYSDBA" @c:\Oracle\admin  
\etm10g\create\sys\_init\_etm10g.sql > NUL

Sys Init Sql script executed. Check  
sys\_init\_etm10g.log to verify status

Would you like to generate the initialization  
script that needs to be run by system? (y/n) [y]:

System Init Sql script written to:

c:\Oracle\admin\etm10g\create\system\_init\_etm10g.s  
ql

Would you like to run the 'system db init' scripts  
to initialize the database? (y/n) [y]: y

Please enter the password for database user  
'system' [manager]:

c:\Oracle\ora10g\bin\sqlplus "system/manager"

@c:\Oracle\admin\etm10g\create\system\_init\_etm10g.  
sql > NUL

System Init Sql script executed. Check  
system\_init\_etm10g.log to verify status

```
Would you like the script to update the Database
Service for NT to restart automatically? (y/n)
[y]:
```

```
End of SecureLogix Corporation's DB Creation
Utility
```

## Create a TNS Listener

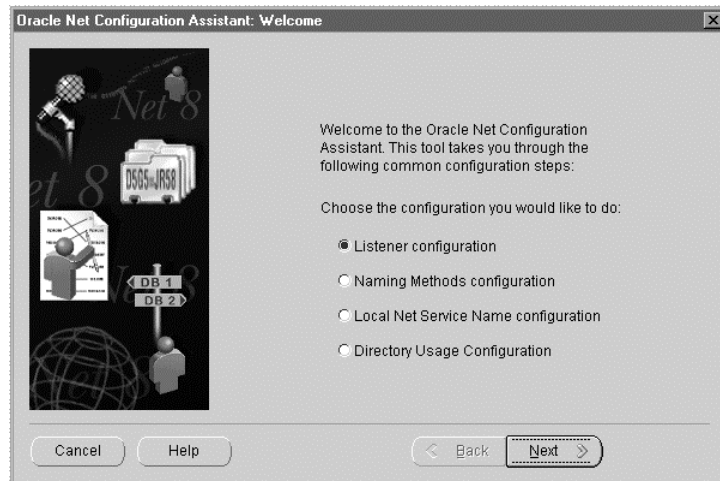
If this is a new install, you need to create the TNS Listener service to allow network connections to the Oracle database. You can verify whether you need to configure a listener by viewing the **Windows Services** dialog box. If a listener exists, a service will be present in the list with a name similar to *OracleOraHome10TNSListener*. Since a single listener may service multiple database instances, separate listeners need not be created for each database instance.

If a listener service does not exist, the following steps describe how to create a listener service. If a listener already exists, you can skip this procedure. See "Creating a TNS Listener Password" on page 13, then see the *ETM<sup>®</sup> System Installation Guide* for instructions for configuring the ETM Database.

### To create the listener

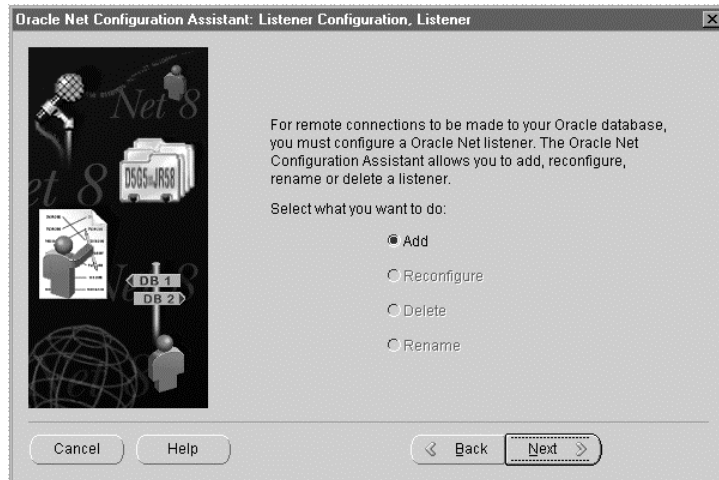
1. On the Windows task bar, click **Start | Programs | Oracle - OraHome<version> | Configuration and Migration Tools | Net Configuration Assistant**.

The **Net Configuration Assistant** appears.



2. Click **Listener configuration**, then click **Next**.

The **Listener** dialog box appears.



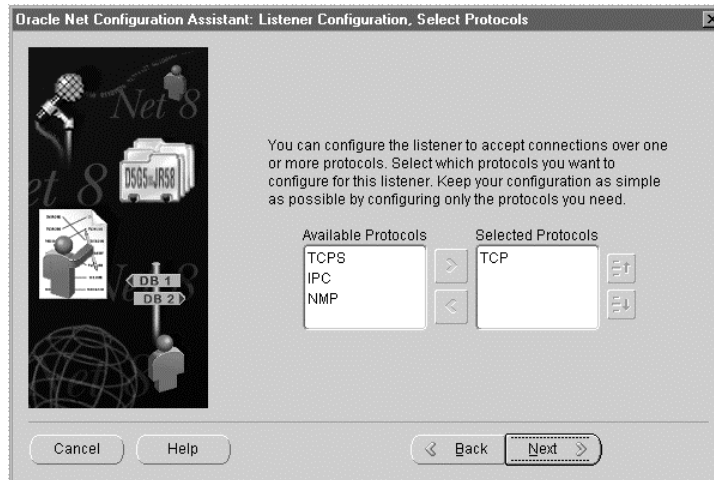
3. Click **Add**, then click **Next**.

The **Listener Name** dialog box appears.

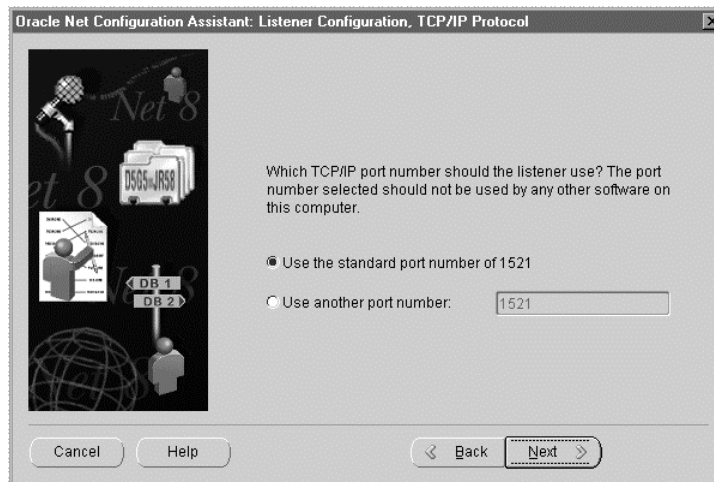


4. In the **Listener name** box, type a name or keep the default of LISTENER. Click **Next**.

The **Select Protocols** dialog box appears.



5. Verify that **TCP** is in the **Selected Protocols** list, then click **Next**.  
The **TCP/IP Protocol** dialog box appears.

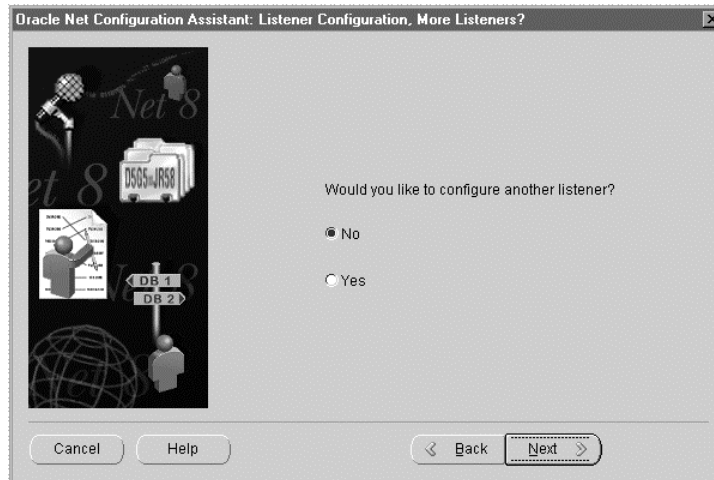


You need to know the port of the listener when you configure the **ETM Database Maintenance Tool**.

6. Select the port number. The default port is 1521. If this conflicts with another device or server, select another port. You need to know the port of the listener when you configure the **ETM Database Maintenance Tool**. When finished, click **Next**.

The **More Listeners** dialog box appears.





7. Click **No**, then click **Next**.

The **Listener Configuration** dialog box appears.

8. Click **Next**, then click **Finish**.

### **Creating a TNS Listener Password**

Define a password for the TNS Listener as explained below. Then refer to the *ETM<sup>®</sup> System Installation Guide* to create and configure the database.

#### **To configure the TNS Listener with a password**

1. At a command prompt, type the following:  
`>lsnrctl`
2. The **LSNRCTL>** prompt appears. type:  
`CHANGE_PASSWORD`
3. At the **Old Password:** prompt, press ENTER. (If there is an old password, type the old password, then press ENTER.)
4. At the **New Password:** prompt, type the password, then press ENTER.
5. At the **Reenter New Password:** prompt, type the same password again, then press ENTER.

The following messages appear:

```
Connecting to
  (ADDRESS=(PROTOCOL=ipc)(KEY=iris))
Password changed for LISTENER
The command completed successfully.
```

6. At the **LSNRCTL>** prompt, type:  
`SET_PASSWORD`
7. At the Password prompt, type the password that you typed in step 4, then press ENTER.
8. At the **LSNRCTL>** prompt, type:  
`SAVE_CONFIG`

A message similar to the following appears:

```
Connecting to (ADDRESS=(PROTOCOL=tcp)(PORT=1521))
Saved TNSLISTENER configuration parameters.
Listener Parameter File
C:\oracle\ora102\network\admin\listener.ora
Old Parameter File
C:\oracle\ora102\network\admin\listener.bak
The command completed successfully.
```

Additional information regarding the TNS Listener can be found on the Oracle web site at the following URL:

**<http://otn.oracle.com/documentation/index.html>**

## Where to Go From Here

The Oracle 10g Enterprise Edition database is now installed, running, and configured with the ETM System user and necessary permissions and privileges. If the ETM Management Server is installed on a different computer from the database, see "Install the Oracle Client Tools" below. If the ETM Server is on the same computer as the database, continue with "Connect with the ETM<sup>®</sup> Database Maintenance Tool" on page 21.

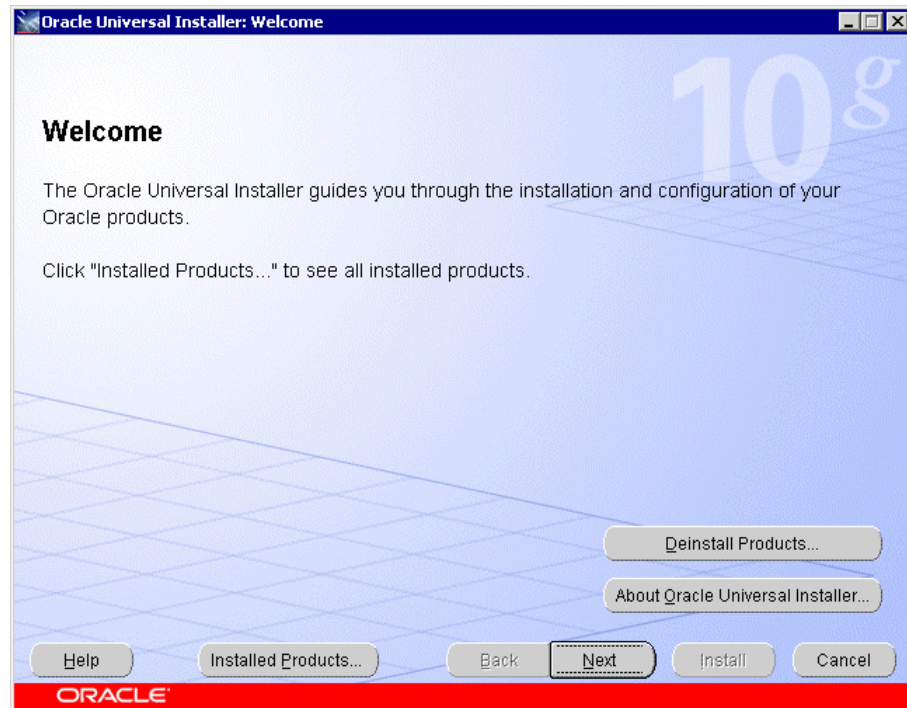
Be sure to copy the database driver, **ojdbc14.jar**, from the new installation to the ETM Server directory. See the *ETM<sup>®</sup> System Installation Guide* for complete ETM Software installation and configuration instructions.

## Install the Oracle Client Tools

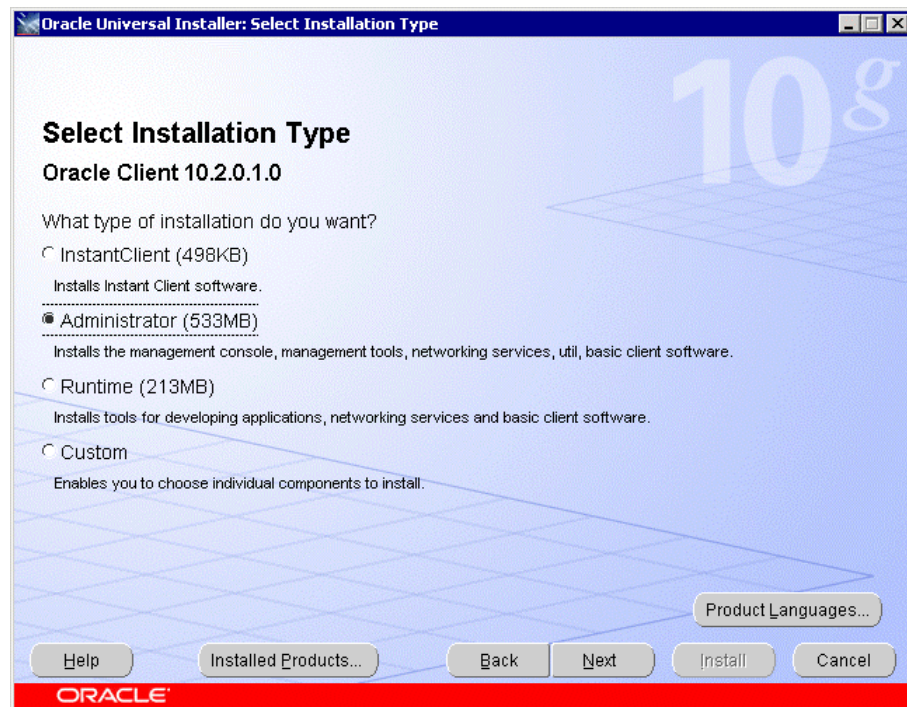
If the ETM<sup>®</sup> Management Server is installed on the same computer as Oracle, you do not need to install the Oracle Client Tools separately, since they are installed as part of the database software. Continue with the next topic. However, if the ETM Management Server is installed on a different computer from the database, you need to install the Oracle Client Tools on the computer on which the ETM Management Server is installed.

### To install the Oracle Client Tools

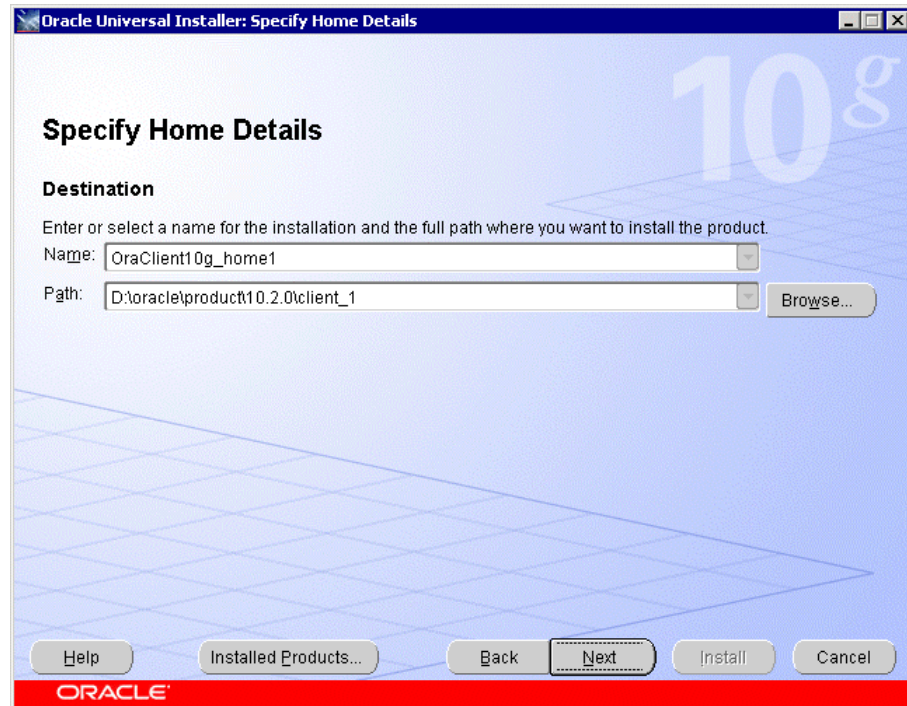
1. Insert the Oracle CD in the CD-ROM drive. If installer does not start automatically, run **setup.exe** from the CD.
2. The **Welcome** dialog box appears. Click **Next**.



3. Click **Next**. The **File Locations** dialog box appears.

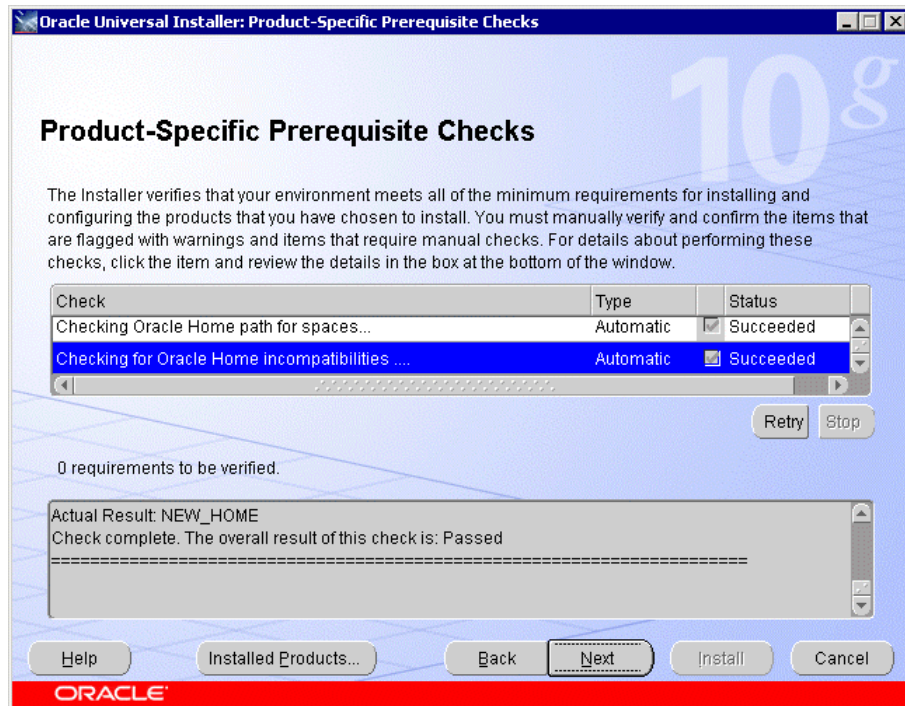


4. Select **Administrator**, and then click **Next**. The **Specify Home Details** dialog box appears.

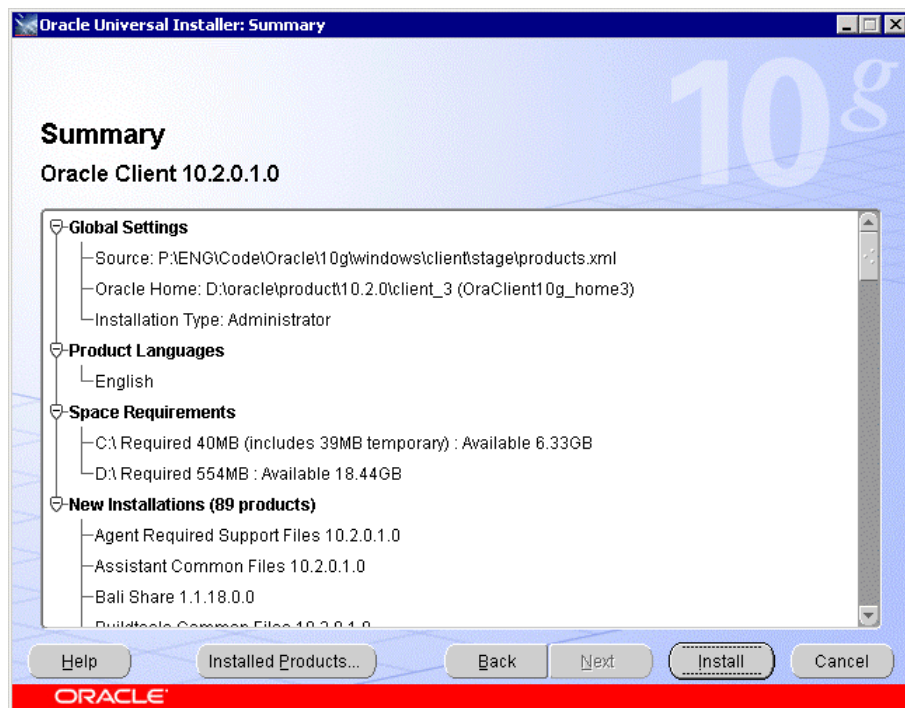


5. Leave the default and click **Next**. The **Product-Specific Prerequisite Checks** dialog box appears.

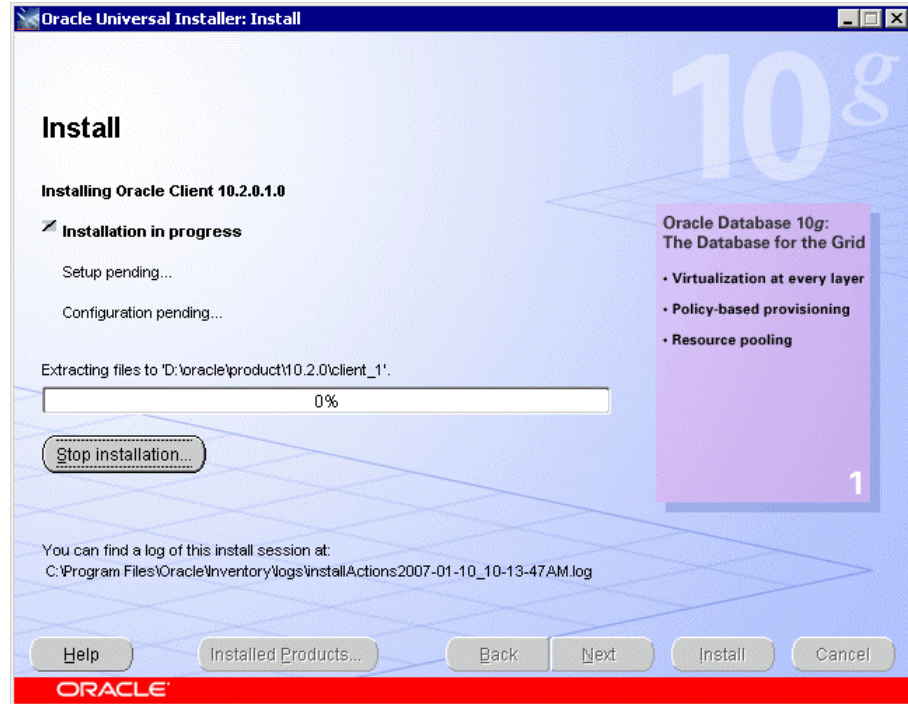




- Click **Next**. The **Summary** dialog box appears showing a summary of your installation selections.



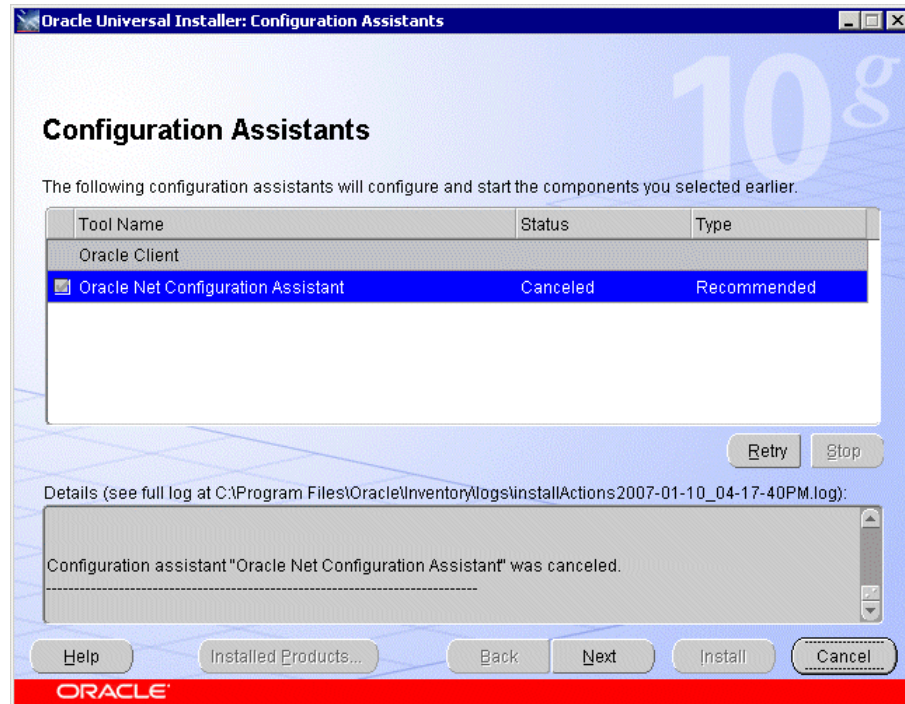
7. Click **Install**. The **Install** dialog box appears and shows progress of the installation. Installation begins and may take some time.



8. When installation is complete, the **Configuration Assistants** dialog box appears.



showing the cancellation. An error message may appear in front of it. This simply indicates you cancelled the unneeded tool. Click **OK**.



11. Click **Cancel**. Another warning appears for the unneeded tool. Click **OK**.
12. Click **Yes** to confirm you want to exit.
13. Continue with "Edit the tnsnames.ora File" below.

### **Edit the tnsnames.ora File**

The **tnsnames.ora** file tells the ETM<sup>®</sup> Server where to find the ETM Database. The **tnsnames.ora** file is in the directory **<ORACLE\_HOME>\network\admin** and can be edited in a text editor such as Notepad.

The **tnsnames.ora** file appears similar to the following:

```
Jackson_10.1.1.173 =
  (DESCRIPTION =
    (ADDRESS_LIST =
      (ADDRESS = (PROTOCOL = TCP)(HOST =
        10.1.1.173)(PORT = 1521))
    )
  )
(CONNECT_DATA = (SID = Jackson)(SERVER = DEDICATED))
```



where `Jackson` is the database SID, `10.1.1.173` is the IP address of the database host computer, and `1521` is the TCP/IP port used by the Listener.

#### **To edit the `tnsnames.ora` file**

- Edit the database instance name, IP address, and port number to reflect your database configuration.

#### ***Connect with the ETM<sup>®</sup> Database Maintenance Tool***

After copying the database driver, **`ojdbc14.jar`**, to the ETM Server installation directory, you connect to the database with the ETM Database Maintenance Tool to complete database configuration. See the *ETM<sup>®</sup> System Installation Guide* for instructions.