



Installing and Configuring Oracle 18c on Windows for Use with the ETM[®] System

For Use with the ETM[®] System v9.x



Corporate Headquarters:

SecureLogix Corporation
13750 San Pedro, Suite 820
San Antonio, Texas 78232
Telephone: 210-402-9669 (non-sales)
Fax: 210-402-6996
Email: info@securelogix.com
Website: <https://www.securelogix.com>

Sales:

Telephone: 1-800-817-4837 (North America)
Email: sales@securelogix.com

Customer Support:

Telephone: 1-877-SLC-4HELP
Email: support@securelogix.com
Web Page: <https://support.securelogix.com>

Training:

Telephone: 210-402-9669
Email: training@securelogix.com

Documentation:

Email: docs@securelogix.com
Web Page: <https://support.securelogix.com>

IMPORTANT NOTICE:

This manual and the software and/or Products described in it are furnished under license with SecureLogix Corporation ("SecureLogix") and may be used only in accordance with the terms of such license.

Except as permitted by such license, no part of this publication may be reproduced, stored in a retrieval system, or transmitted, in any form or by any means, electronic, mechanical, recording, or otherwise, without prior written permission of SecureLogix.

The content of this manual is subject to change without notice. SecureLogix assumes no responsibility or liability for any errors or inaccuracies that may be contained herein or to correct the same.

ETM, We See Your Voice, SecureLogix, and the SecureLogix Emblem are registered trademarks and registered service marks of SecureLogix Corporation in the U.S.A. and other countries. PolicyGuru is a registered trademark of SecureLogix Corporation in the U.S.A. All other trademarks mentioned herein are believed to be trademarks of their respective owners.

© Copyright 2021-2022 SecureLogix Corporation. All Rights Reserved.

This product is protected by one or more of the following patents: DE 1,415,459 B1, FR 1,415,459 B1, and GB 1,415,459 B1. U.S. Patents Pending.

Contents

Oracle 18c: Installation and Configuration for the ETM[®] Database 3

Introduction	3
Installation and Configuration	3
Installing Oracle 18c Enterprise Edition	3
Verifying Perl is in Your System PATH	13
Running the ETM [®] Database Configuration Script	15
Sample Output of Running oracle_install.pl	15
Configure the TNS Listener	23
Copy the Database Driver to Required Locations	24
Edit Configuration Files	25
ETM Server Configuration File	25
Report Server Configuration File	25
Database Maintenance Tool Configuration File	26
Where to Go From Here	26
Install the Oracle Client	26
Installing the Oracle Client Tools	27
Edit the tnsnames.ora File	33
Connect with the ETM [®] Database Maintenance Tool	34



Oracle 18c: Installation and Configuration for the ETM[®] Database

Introduction

This document explains how to install the Oracle 18c software on Windows and then run the Perl scripts to prepare the database for use with the ETM[®] System v9.x.

Oracle 18 Enterprise Edition, Standard Edition, and Standard Edition One are supported. XE is not supported. This document describes Enterprise Edition installation. Minor variations may occur when installing other editions.

Note: If you are upgrading an existing ETM System Database installation from 11g to 18c, refer to “[ETMD0651 – Updating the ETM[®] Database When Upgrading from Oracle 11g to 18c on Windows](#)” instead.

NOTES::

- Ensure that no Windows Scheduler jobs run while you are running the Oracle Universal Installer or you may encounter installation problems, particularly if temporary files used in the installation are cleaned up before it completes.
- Do not install Oracle Database 18c software into an existing Oracle home.

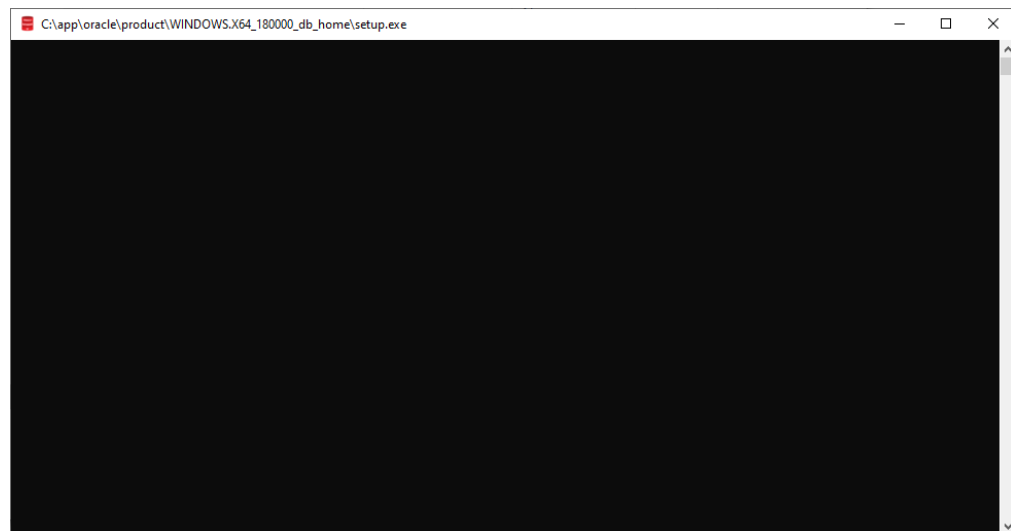
Installation and Configuration

Installing Oracle 18c Enterprise Edition

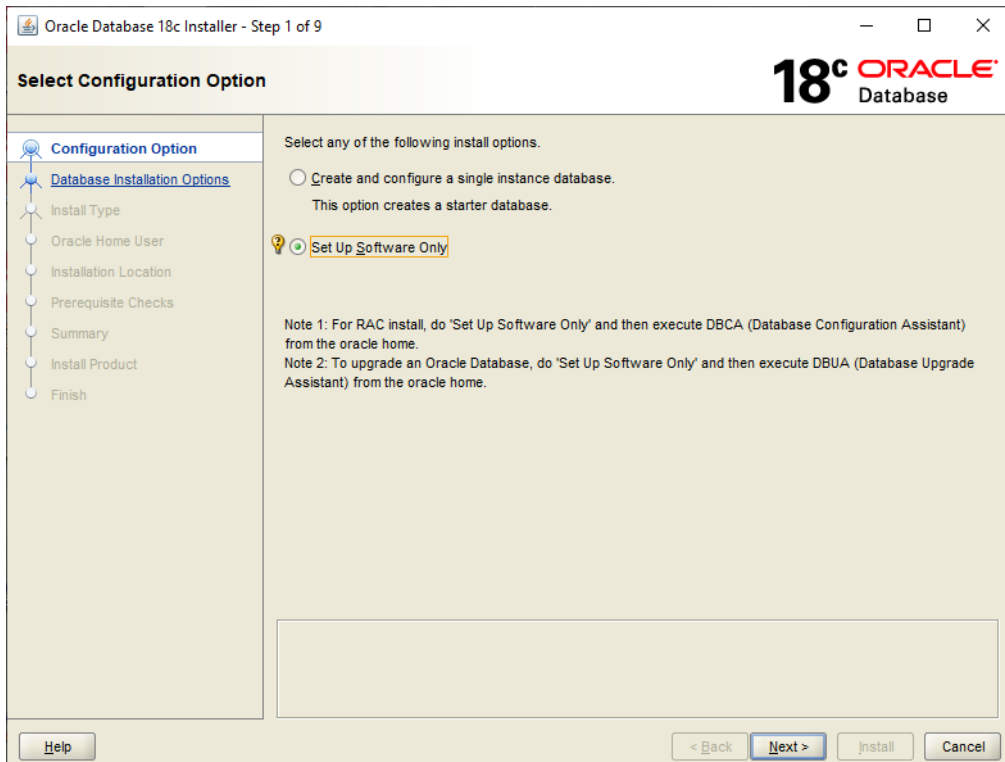
To install the Oracle software

1. Download the Oracle 18c zip-file distribution from the Oracle web site. <https://www.oracle.com/database/technologies/oracle18c-windows-180000-downloads.html>
2. Unzip the contents of the Oracle zip-file into your preferred Oracle installation location. Example:
C:\app\oracle\product\WINDOWS.X64_180000_db_home

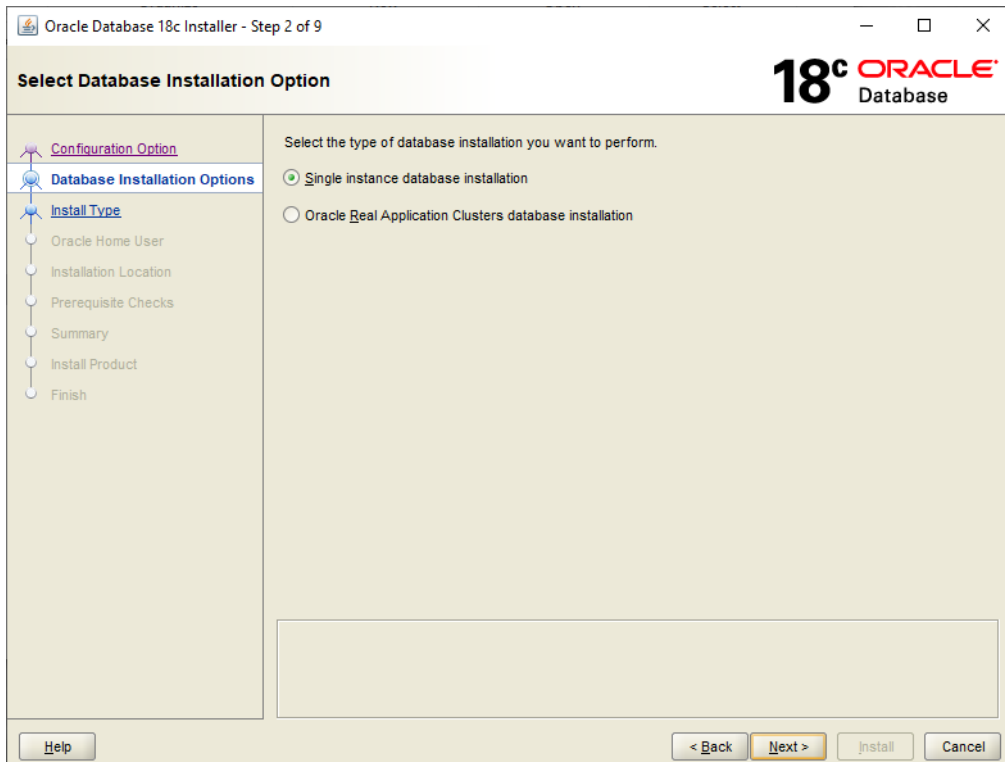
3. Execute **setup.exe** located in the Oracle installation location as Administrator to start the Oracle 18c Universal Installer:



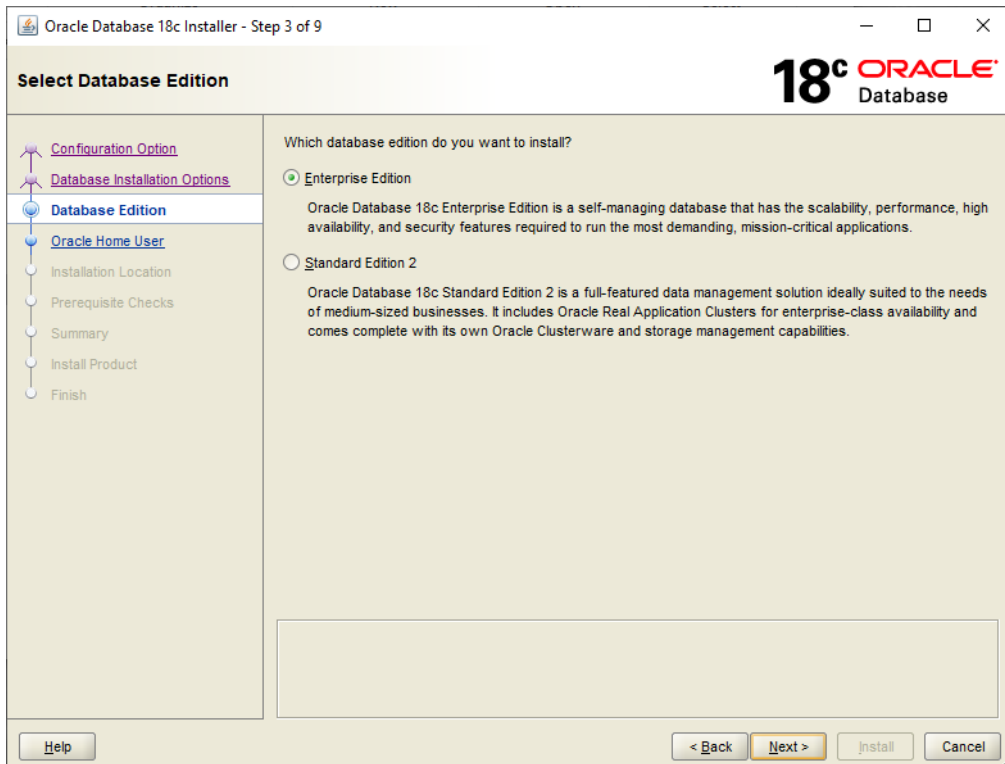
4. The **Configure Security Updates** dialog box appears.



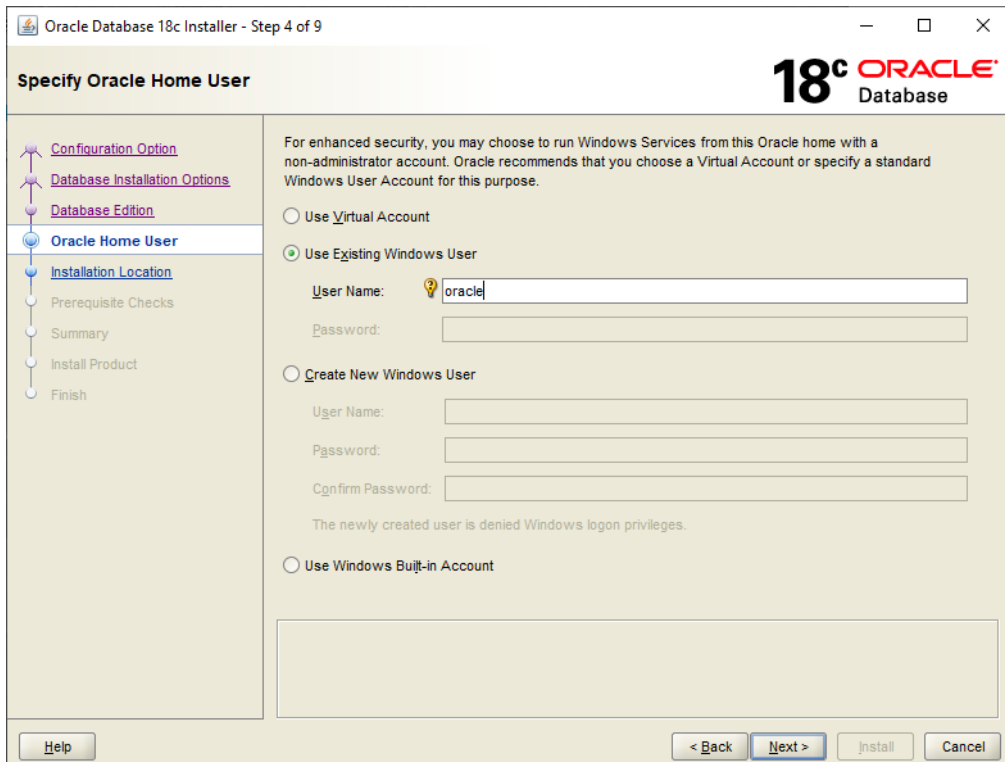
5. Select **Install database software only** and then click **Next**.
6. The **Select Database Installation Option** dialog box appears.



7. Select **Single instance database installation** and then click **Next**.
8. If you are prompted to set a language option, leave the default of English and click **Next**.
9. The **Select Database Edition** dialog box appears.

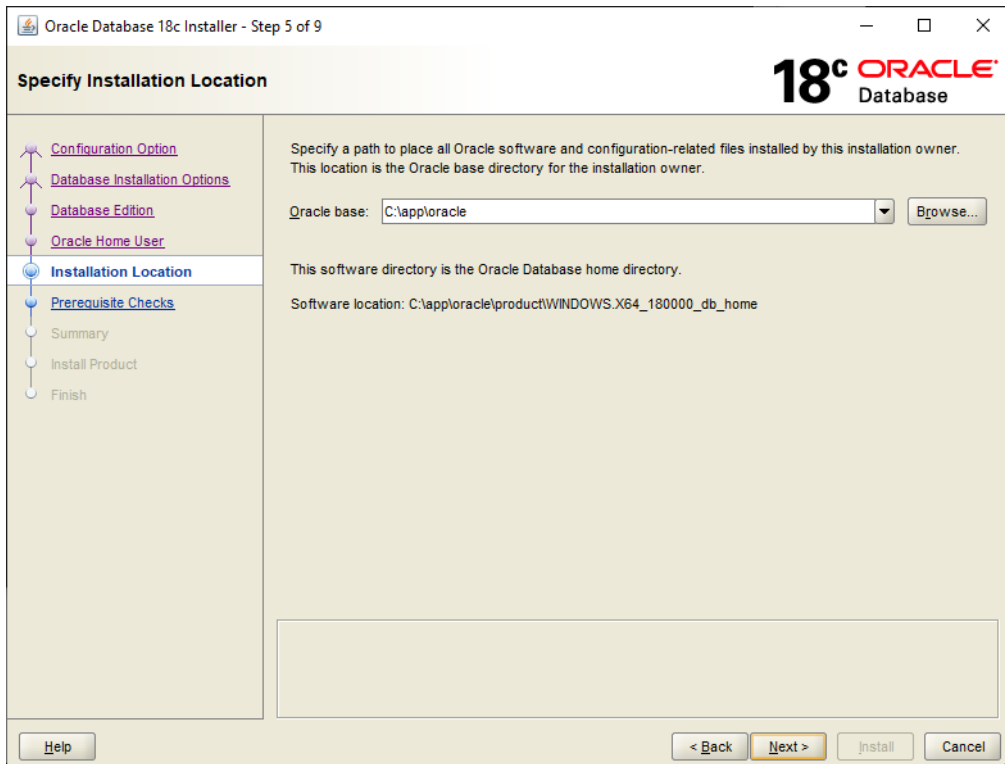


10. Select the edition you are licensing. These instructions illustrate installation of Enterprise Edition. Then click **Next**.
11. The **Specify Oracle Home User** dialog box appears.

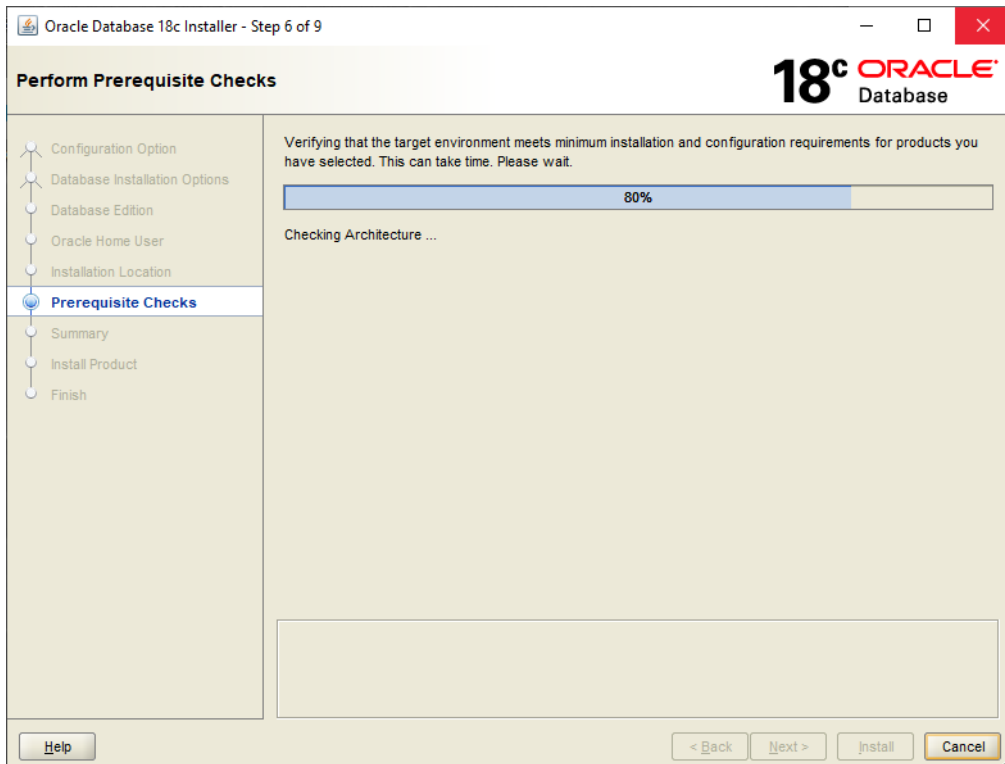


12. Select the Windows user account you want to use and specify the username and password if required, and then click **Next**.

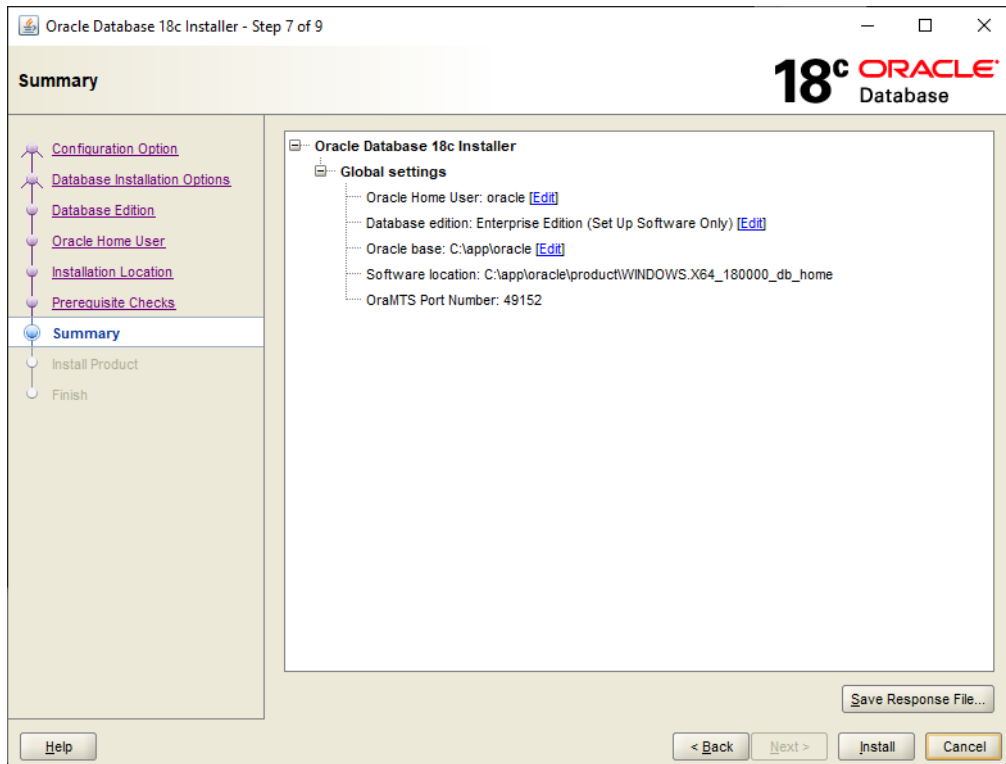
13. The **Specify Installation Location** dialog box appears.



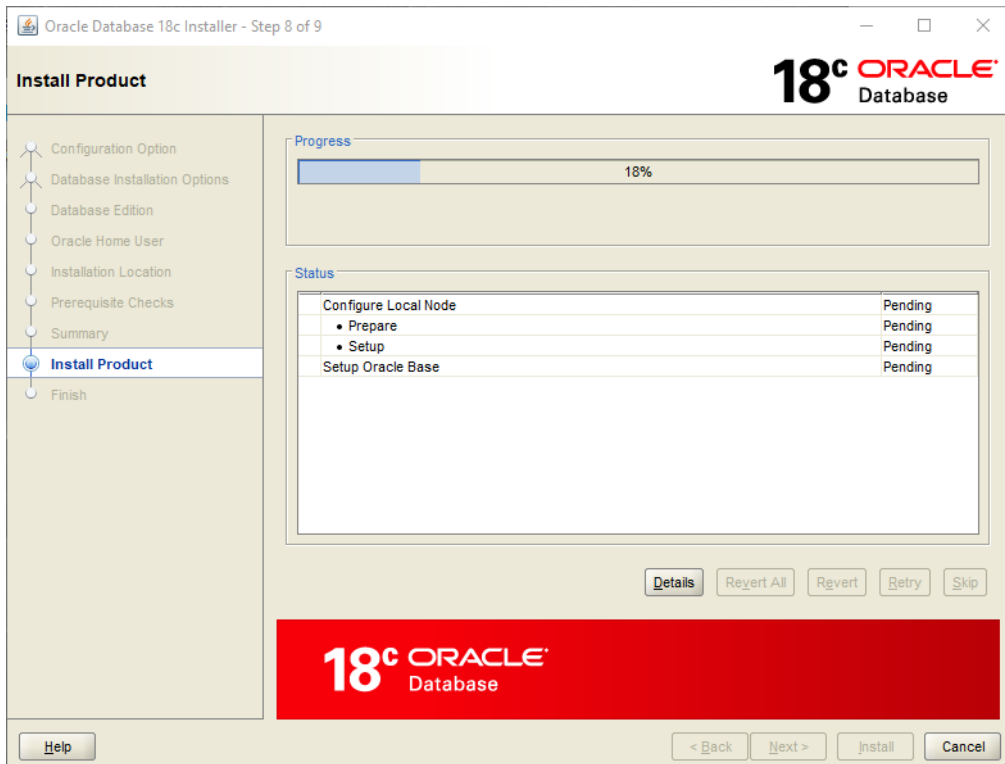
14. The software installation location you select is referred to as ORACLE_HOME. Keep the defaults or make changes and then click **Next**.
15. The **Perform Prerequisite Checks** dialog box appears.



16. After the prerequisite checks complete, the **Summary** dialog box appears reflecting the settings you chose.

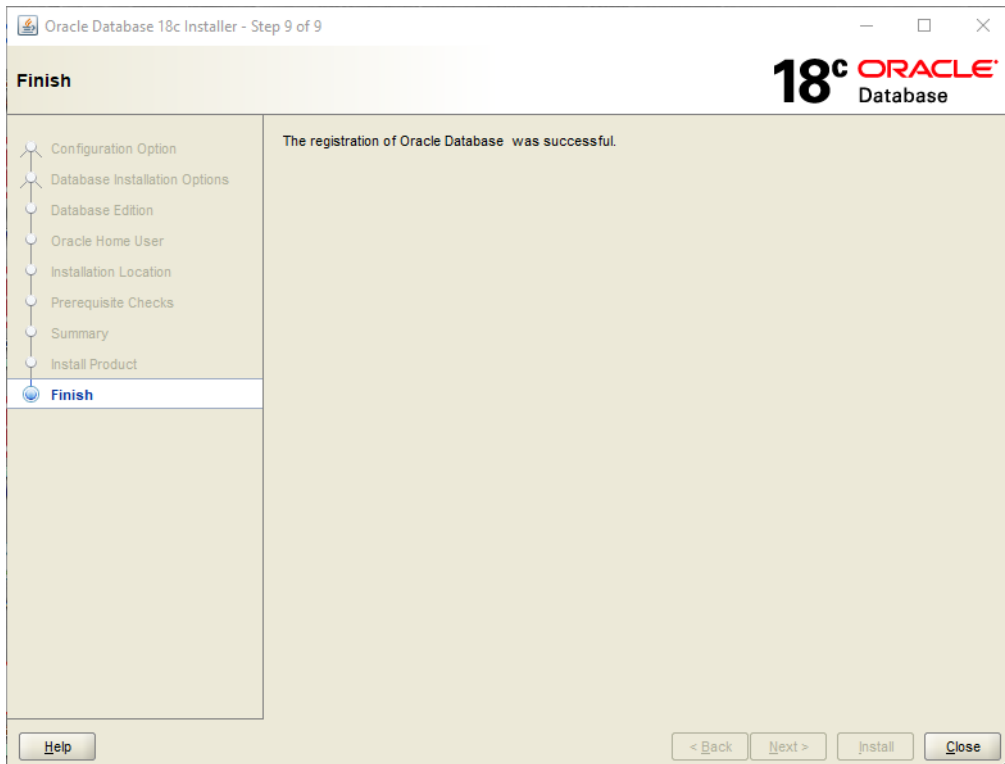


17. Click **Install**. The **Install Product** dialog box appears.



18. When installation is complete, click **Next**.

The **Finish** dialog box appears.

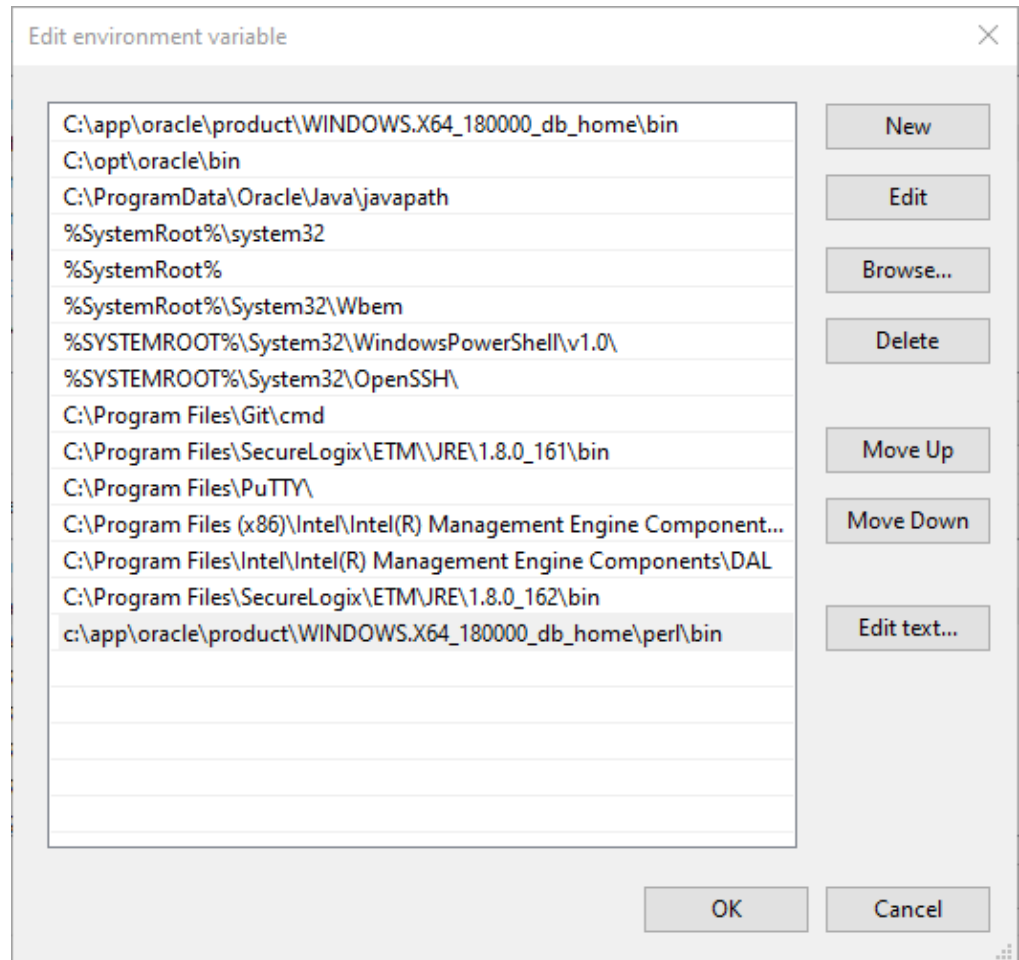


19. Click **Close**.

Verifying Perl is in Your System PATH

Perl is used to run the database creation and configuration scripts. Oracle 18c (Enterprise and Standard) includes a version of Perl with the installation.

IMPORTANT Be sure that the Perl "bin" directory is in your system PATH variable.



Running the ETM[®] Database Configuration Script

IMPORTANT: You must run this script as **Administrator**.

To run the ETM[®] Database creation and configuration script

1. Open the following script in a text editor:

<INSTALL_DIR>\scripts\Oracle\ oracle_install.pl

2. Locate the line that reads:

```
$cmd = $ORACLE_BIN."orapwd file=$ORAPWD_FILE  
password=change_on_install";
```

3. This is a temporary password for script execution only; it is not retained in the system. Oracle 18 enforces minimum password complexity requirements and requires the password to contain at least one digit and 1 special character. At a minimum, append a digit and a special character to the end of the supplied password, or replace it with a password that meets Oracle's minimum password complexity requirements.
4. Save the file.
5. Open a command prompt as **Administrator** in the ETM **Scripts** directory: **<INSTALL_DIR>\scripts\Oracle**.
6. At the prompt, type: **perl oracle_install.pl**
7. Follow the onscreen prompts.
 - Some prompts provide default values that you can accept by pressing ENTER. These are denoted by square brackets.
 - Example input is denoted by parentheses. You must type a value for these items; no default values are provided.

Sample Output of Running oracle_install.pl

SecureLogix Corporation's DB Creation Utility

Version: 3.0 Supports Oracle 11, 12, and 18

Please enter your OS Type (DOS/UNIX) [DOS]:

```

Please enter your Domain Name (securelogix.com): slc.com
slc.com - Is this correct? (y/n) [n]: y
Please enter your Host Address [10.1.2.194]:
10.1.2.194 - Is this correct? (y/n) [n]: y
Please Enter the value for ORACLE_BASE (C:\app\oracle\): c:\app\oracle\
Are you sure you want to set ORACLE_BASE to c:\app\oracle\? (y/n): y
Please Specify the Oracle version. (11, 12, or 18): 18
Found directory c:\app\oracle\product\WINDOWS.X64_180000_db_home\
Set ORACLE_HOME to: 'c:\app\oracle\product\WINDOWS.X64_180000_db_home\'?
(y/n) [y]: y
Unable to find admin directory under Oracle Base. Now checking Oracle Home.
Set ORACLE_DATA to:
'c:\app\oracle\product\WINDOWS.X64_180000_db_home\oradata\'? (y/n) [y]: y
Please Enter the value for ORACLE SID: ORA18
ORA18 - Is this correct? (y/n) [Y]: y
Please enter the listener port for Oracle [1521]:
1521 - Is this correct? (y/n) [y]: y
Creating Data Directories for SID: ORA18
Would you like the script to create the orapwd file? (y/n) [y]: y
Would you like the script to modify the listener.ora file? (y/n) [y]:
Would you like the script to modify the tnsnames.ora file? (y/n) [y]:
Would you like to create the init.ora file for this database? (y/n) [y]:
Would you like the script to create the Database Service for Windows? (y/n)
[y]:
Enter password for Oracle service user: ← This is the password for the Oracle user account
specified during installation of Oracle 18

```

```

Instance created. ← IF SCRIPT PAUSES HERE, PRESS 'ENTER' KEY TO RESUME

```

```

Would you like to generate the Oracle scripts to generate the database?
(y/n) [y]: y
Please enter the preferred Tablespace name [ETM]:
Please enter the ETM User name [etmuser]:
Please specify the password for the ETM User: etmpass

```

Please re-enter the password for the ETM User: etmpass

Would you like to generate the Oracle scripts to generate a non-owner ETM application user? (y/n) [n]:

Create Database Sql script written to:

c:\app\oracle\product\WINDOWS.X64_180000_db_home\admin\ORA18\create\create_db_ORA18.sql

These scripts contain the details of how the database will be created. If you would like to configure the tablespaces, redo files, rollback segments, or other parameters, please modify this file before running it.

Would you like to run the Oracle scripts to generate the database? (y/n) [y]:

**Please enter the password for database user 'sys' [change_on_install]:
ChangeMe123!**

c:\app\oracle\product\WINDOWS.X64_180000_db_home\bin\sqlplus
"sys/ChangeMe123! AS SYSDBA"

@c:\app\oracle\product\WINDOWS.X64_180000_db_home\admin\ORA18\create\create_db_ORA18.sql

SQL*Plus: Release 18.0.0.0.0 - Production on Thu Jun 4 09:06:49 2020
Version 18.3.0.0.0

Copyright (c) 1982, 2018, Oracle. All rights reserved.

Connected to an idle instance.

SQL>

SQL> REM * Actually starts the database instance

SQL> startup nomount

pfile="c:\app\oracle\product\WINDOWS.X64_180000_db_home\admin\ORA18\pfile\init.ora"

ORACLE instance started.

Total System Global Area 536868376 bytes

Fixed Size 8791576 bytes

Variable Size 201326592 bytes

Database Buffers 318767104 bytes

Redo Buffers 7983104 bytes

SQL>

SQL> REM * Creates the physical database. Feel free to customize the redo logs here.

SQL> CREATE DATABASE ORA18

2 MAXLOGFILES 32

3 MAXLOGMEMBERS 2

4 MAXLOGHISTORY 1

5 MAXDATAFILES 254

6 MAXINSTANCES 1

7 MAXLOGHISTORY 5000

8 DATAFILE

'c:\app\oracle\product\WINDOWS.X64_180000_db_home\oradata\ORA18\system01.dbf'
' SIZE 150M REUSE AUTOEXTEND ON NEXT 10240K MAXSIZE UNLIMITED

9 EXTENT MANAGEMENT LOCAL

10 SYSAUX DATAFILE

'c:\app\oracle\product\WINDOWS.X64_180000_db_home\oradata\ORA18\sysaux01.dbf'
' SIZE 120M REUSE AUTOEXTEND ON NEXT 10240K MAXSIZE UNLIMITED

11 SMALLFILE DEFAULT TEMPORARY TABLESPACE TEMP TEMPFILE

'c:\app\oracle\product\WINDOWS.X64_180000_db_home\oradata\ORA18\temp01.dbf'
SIZE 500M REUSE AUTOEXTEND ON

12 SMALLFILE UNDO TABLESPACE "UNDOTBS1" DATAFILE

'c:\app\oracle\product\WINDOWS.X64_180000_db_home\oradata\ORA18\undotbs01.dbf'
f' SIZE 500M REUSE AUTOEXTEND ON

13 LOGFILE

'c:\app\oracle\product\WINDOWS.X64_180000_db_home\oradata\ORA18\redo01.log'
SIZE 10M,

14

'c:\app\oracle\product\WINDOWS.X64_180000_db_home\oradata\ORA18\redo02.log'
SIZE 10M,

15

'c:\app\oracle\product\WINDOWS.X64_180000_db_home\oradata\ORA18\redo03.log'
SIZE 10M;

Database created.

SQL>

```

SQL> CREATE TABLESPACE "ETM" LOGGING
      2      DATAFILE
      'c:\app\oracle\product\WINDOWS.X64_180000_db_home\oradata\ORA18\ETM01.dbf'
      SIZE 100M
      3      AUTOEXTEND ON NEXT 10M
      4      EXTENT MANAGEMENT LOCAL;

```

Tablespace created.

```

SQL>
SQL> REM * Create the default user for use with the system.
SQL> CREATE USER etmuser PROFILE "DEFAULT" IDENTIFIED BY "etmpass"
      2      DEFAULT
      3      TABLESPACE "ETM" TEMPORARY
      4      TABLESPACE "TEMP" ACCOUNT UNLOCK;

```

User created.

```

SQL>
SQL> REM * Explicitly grant the required system privileges. We explicitly
grant
SQL> REM * the privileges as opposed to granting them via roles due to the
fact
SQL> REM * that when running jobs via DBMS_JOB.RUN() roles are ignored.
Since
SQL> REM * we use DBMS_JOB to run various maintenance procedures, we go
ahead
SQL> REM * and explicitly grant the privileges to cover all our bases. (For
more
SQL> REM * information refer to the Oracle Database documentation sets for
the
SQL> REM * corresponding Oracle version regarding the DBMS_JOB package).
SQL> GRANT ALTER SESSION TO etmuser;

```

Grant succeeded.

```
SQL> GRANT CREATE PROCEDURE TO etmuser;
```

Grant succeeded.

```
SQL> GRANT CREATE SEQUENCE TO etmuser;
```

Grant succeeded.

```
SQL> GRANT CREATE SESSION TO etmuser;
```

Grant succeeded.

```
SQL> GRANT CREATE MATERIALIZED VIEW TO etmuser;
```

Grant succeeded.

```
SQL> GRANT CREATE TABLE TO etmuser;
```

Grant succeeded.

```
SQL> GRANT CREATE TRIGGER TO etmuser;
```

Grant succeeded.

```
SQL> GRANT CREATE VIEW TO etmuser;
```

Grant succeeded.

```
SQL> GRANT CREATE ANY SYNONYM TO etmuser;
```

Grant succeeded.

```
SQL> GRANT DROP ANY SYNONYM TO etmuser;
```

Grant succeeded.

```
SQL> GRANT SELECT ANY DICTIONARY TO etmuser;
```

Grant succeeded.

```
SQL> GRANT EXECUTE ON DBMS_LOCK to etmuser;
```

```
GRANT EXECUTE ON DBMS_LOCK to etmuser
```

*

ERROR at line 1:

ORA-04042: procedure, function, package, or package body does not exist

```
SQL>
```

```
SQL> REM * By default, just grant the user unlimited use of the tablespaces.
```

```
SQL> REM * DBAs may optionally revoke this grant and set up specific quotas
```

```
SQL> REM * for the various tablespaces.
```

```
SQL> GRANT UNLIMITED TABLESPACE TO etmuser;
```

Grant succeeded.

```
SQL>
```

```
SQL>
```

```
SQL>
```

```
SQL> spool off
```

```
SQL> EXIT
```

Disconnected from Oracle Database 18c Enterprise Edition Release 18.0.0.0.0
- Production

Version 18.3.0.0.0

Database creation script executed. Verify output and press 'y' to continue (y/n) [y]:

Would you like to generate the initialization script that needs to be run by sys? (y/n) [y]:

Sys Init Sql script written to:

c:\app\oracle\product\WINDOWS.X64_180000_db_home\admin\ORA18\create\sys_init_ORA18.sql

Would you like to run the 'sys db init' scripts to initialize the database? (y/n) [y]:

Depending on the system, this script may require up to 30 minutes to complete.

Please be patient. To verify script is running, you can check the log file at:

c:\app\oracle\product\WINDOWS.X64_180000_db_home\admin\ORA18\create\sys_init_ORA18.log and make sure data is being written to file.

c:\app\oracle\product\WINDOWS.X64_180000_db_home\bin\sqlplus

"sys/ChangeMe123! AS SYSDBA"

@c:\app\oracle\product\WINDOWS.X64_180000_db_home\admin\ORA18\create\sys_init_ORA18.sql > NUL

Sys Init Sql script executed. Check sys_init_ORA18.log to verify status

Would you like to generate the initialization script that needs to be run by system? (y/n) [y]:

System Init Sql script written to:

c:\app\oracle\product\WINDOWS.X64_180000_db_home\admin\ORA18\create\system_init_ORA18.sql

Would you like to run the 'system db init' scripts to initialize the database? (y/n) [y]:

Please enter the password for database user 'system' [manager]:

Please enter the password for database user 'system' [manager]:

c:\app\oracle\product\WINDOWS.X64_180000_db_home\bin\sqlplus

"system/manager "

@c:\app\oracle\product\WINDOWS.X64_180000_db_home\admin\ORA18\create\system_init_ORA18.sql > NUL

System Init Sql script executed. Check system_init_ORA18.log to verify status


```
c:\app\oracle\product\WINDOWS.X64_180000_db_home\bin\sqlplus
"sys/ChangeMe123! AS SYSDBA"
@c:\app\oracle\product\WINDOWS.X64_180000_db_home\admin\ORA18\create\post_cr
eate_grants.sql
```

```
SQL*Plus: Release 18.0.0.0.0 - Production on Thu Jun 4 11:18:13 2020
Version 18.3.0.0.0
```

Copyright (c) 1982, 2018, Oracle. All rights reserved.

```
Connected to:
Oracle Database 18c Enterprise Edition Release 18.0.0.0.0 - Production
Version 18.3.0.0.0
```

Grant succeeded.

```
Disconnected from Oracle Database 18c Enterprise Edition Release 18.0.0.0.0
- Production
Version 18.3.0.0.0
```

```
Would you like the script to update the Database Service for Windows to
restart automatically? (y/n) [y]:
```

End of SecureLogix Corporation's DB Creation Utility

Configure the TNS Listener

A listener with a default name of LISTENER is created when you install the Oracle software, but it must be started or restarted to update it with the configuration for the ETM Database.

To configure the TNS Listener

1. Open a command prompt as Administrator.

2. Type:
c:\app\oracle\product\WINDOWS.X64_180000_db_home\bin\lsnrctl.exe status

3. If a message similar to the following appears, the listener is not running.

Connecting to (ADDRESS=(PROTOCOL=TCP) (HOST=127.0.0.1) (PORT=1521))

TNS-12541: TNS: no listener

TNS-12560: TNS: protocol adapter error

TNS-00511: No listener

64-bit Windows Error: 61: Unknown error

4. If the listener is not running type:
c:\app\oracle\product\WINDOWS.X64_180000_db_home\bin\lsnrctl.exe start

Starting tnslnsr: please wait...

Enter oracle's password : **← Enter the password of the user specified during Oracle installation**

5. If the listener is running, stop it by typing:
c:\app\oracle\product\WINDOWS.X64_180000_db_home\bin\lsnrctl.exe stop

6. When it stops, restart it by typing:
c:\app\oracle\product\WINDOWS.X64_180000_db_home\bin\lsnrctl.exe start

Starting tnslnsr: please wait...

Enter oracle's password : **← Enter the password of the user specified during Oracle installation**

7. When it starts, output should appear showing that it is listening for the ETM instance.

Copy the Database Driver to Required Locations

After installing and configuring the database, copy the supported database driver to each of the following ETM System installation directories:

- The ETM Server.
- Any remote Report Server.
- Any remote ETM Database Maintenance Tool.

Remote ETM System Clients do not require the driver file.

Only the following configuration is supported with Oracle 18c:

- **ETM® System v9.x** using the following driver:
 - **ojdbc8** from Oracle 18c

You can download the supported driver from the Oracle website.

Edit Configuration Files

Perform the following configuration. Due to changes in that Oracle 18c driver, configuration files for the ETM Server, Report Server, and ETM Database Maintenance Tool must be edited to enable the ETM System to connect to the database.

ETM Server Configuration File

To edit the ETM Server configuration file

1. On the ETM Server host, open the file **ETMManagementService.cfg** in a text editor. This file is at the root of the ETM Management Server installation directory.
2. Locate the line labeled :

```
# Java switches to supply to the Java Virtual Machine.
```

3. At the end of the line, append the following switch:

```
-Doracle.jdbc.autoCommitSpecCompliant=false
```

4. The new line should look like the following:

```
switches=-Xmx512M -Djava.rmi.server.useLocalHostName=true -  
Dsun.java2d.noddraw=true -Doracle.jdbc.autoCommitSpecCompliant=false
```

5. Save the file.

Report Server Configuration File

To edit the Report Server configuration file

1. On the Report Server host, open the file **ETMReportService.cfg** in a text editor. This file is at the root of the ETM System installation directory.
2. Locate the line labeled:

```
# The switches to use when creating the java environment that will run the  
# ServerActivator.
```

3. At the end of the line, append the following switch:

```
-Doracle.jdbc.autoCommitSpecCompliant=false
```

4. The new line should look like the following::

```
App_Switches=-Djava.security.policy=policy -Dsun.java2d.noddraw=true -  
Doracle.jdbc.autoCommitSpecCompliant=false
```

5. Locate the line labeled:

```
# The switches to use when launching the rmid executable
```

6. At the end of the line, append the following switch:

```
-Doracle.jdbc.autoCommitSpecCompliant=false
```

7. The new line should look like the following::

```

RMID_Switches=-J-Xrs -J-Djava.rmi.server.useLocalHostName=true -J-
Djava.security.policy=policy -J-Dsun.java2d.noddraw=true -J-
Djava.rmi.server.logCalls=true -C-server -C-Xmx512M -C-
Djava.rmi.server.useLocalHostName=true -C-Djava.security.policy=policy
-C-Dsun.java2d.noddraw=true -C-
Djava.class.path=".;...activation.jar;comm.jar;jakarta-oro-
2.0.jar;log4j-
1.2.8.jar;mail.jar;ojdbc6.jar;ojdbc14.jar;report11_pro.jar;report12_pro
.jar;slc-crypt.jar;TeleWall.jar" -C-
Doracle.jdbc.autoCommitSpecCompliant=false

```

8. Save the file.

Database Maintenance Tool Configuration File

To edit the Database Maintenance Tool configuration file

1. On the Database Maintenance Tool host, open the file **ETMDBMaintTool.cfg** in a text editor. This file is at the root of the ETM System installation directory.
2. Locate the line labeled:

```
# Java switches to supply to the Java Virtual Machine.
```

1. At the end of the line, append the following switch:

```
-Doracle.jdbc.autoCommitSpecCompliant=false
```

The new line should look like the following:

```
switches=-client -Xmx200M -Dsun.java2d.noddraw=true
-Doracle.jdbc.autoCommitSpecCompliant=false
```

2. Save the file.

Where to Go From Here

The Oracle 18c Enterprise Edition database is now installed, running, and configured with the ETM System user and necessary permissions and privileges. If the ETM Management Server is installed on a different computer from the database, see "Install the Oracle Client" below. If the ETM Server is on the same computer as the database, continue with "Connect with the ETM® Database Maintenance Tool" on page 34.

See the *ETM® System Installation Guide* for complete ETM Software installation and configuration instructions.

Install the Oracle Client

If the ETM® Management Server is installed on the same computer as Oracle, you do not need to install the Oracle Client separately, since they are installed as part of the database software. Continue with the next topic. However, if the ETM Management Server is installed on a different computer from the database, you need to install the Oracle Client on the computer on which the ETM Management Server is installed. The Client is used for CCMI and Directory imports.

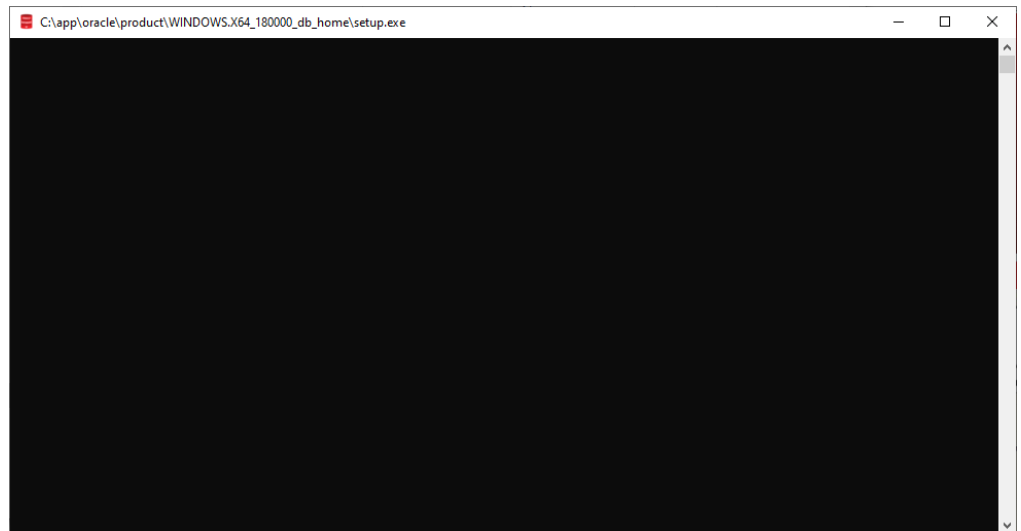
Notes:

- Ensure you log on as a member of the Administrators group to install the software and use **Run as Administrator**.
- Oracle Database Client 18c Release 18 cannot share Oracle base with Oracle homes from earlier database versions, such as Oracle Database 11g Release 2 (11.2) and earlier.
- The Oracle Database Client software is available on installation media or you can download it from the Oracle Technology Network (OTN) website, or Oracle Software Delivery Cloud Web site.

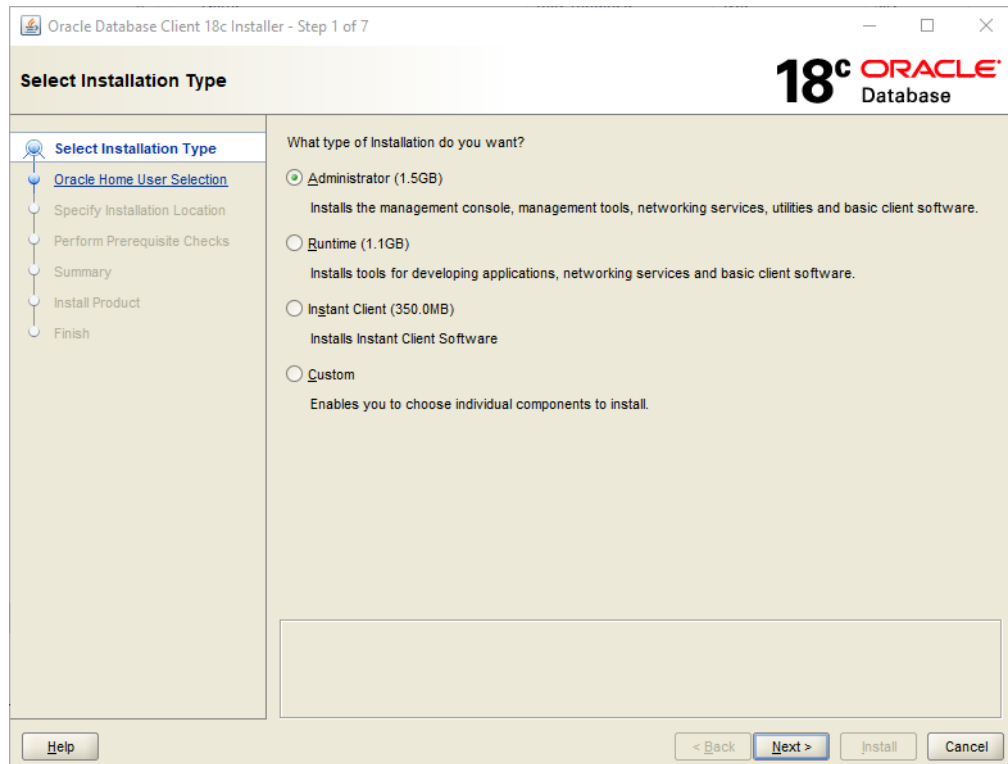
Installing the Oracle Client Tools

To install the Oracle Client Tools

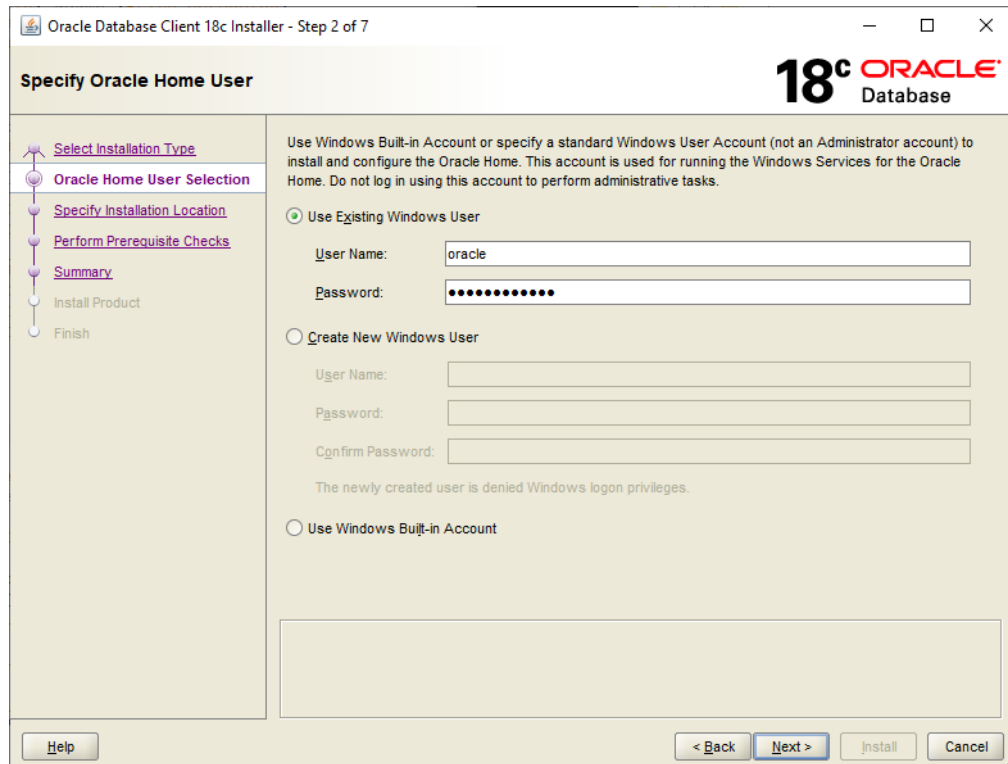
1. Download the Oracle 18c Client Tools zip-file distribution from the Oracle web site.
2. Unzip the contents of the Oracle zip-file into your preferred Oracle installation location. Example:
`C:\app\oracle\product\WINDOWS.X64_180000_client\client`
3. Right-click **setup.exe** and select **Run as Administrator** to start the Oracle UI.



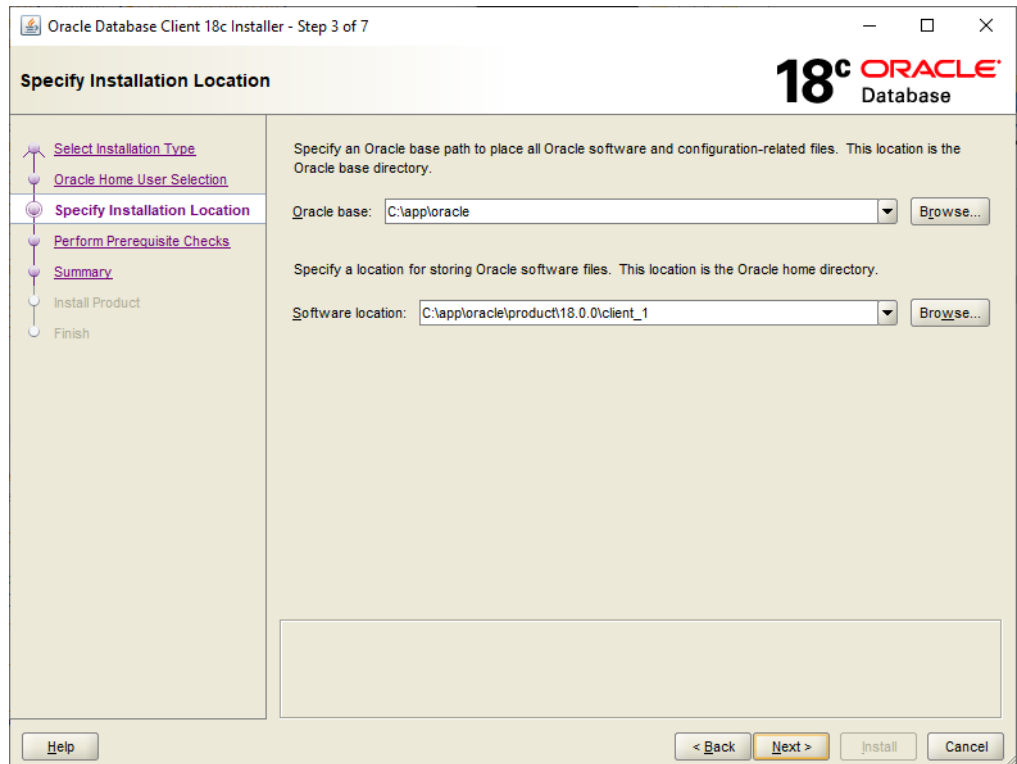
4. The **Select Installation Type** dialog box appears.



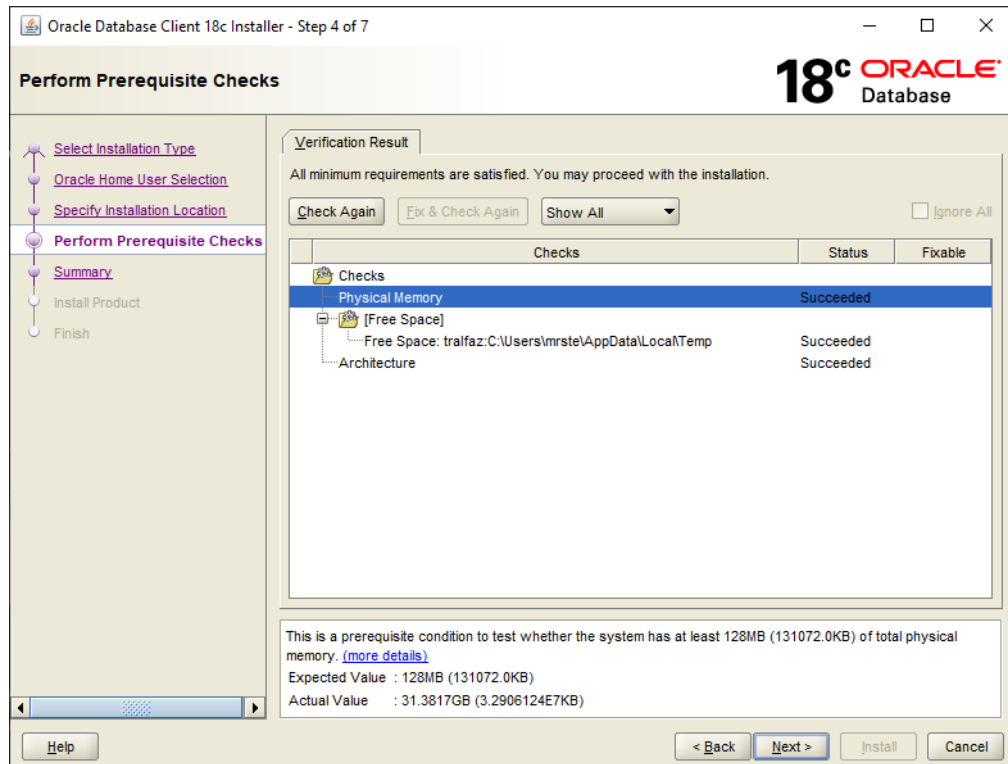
5. Select **Administrator** and click **Next**.



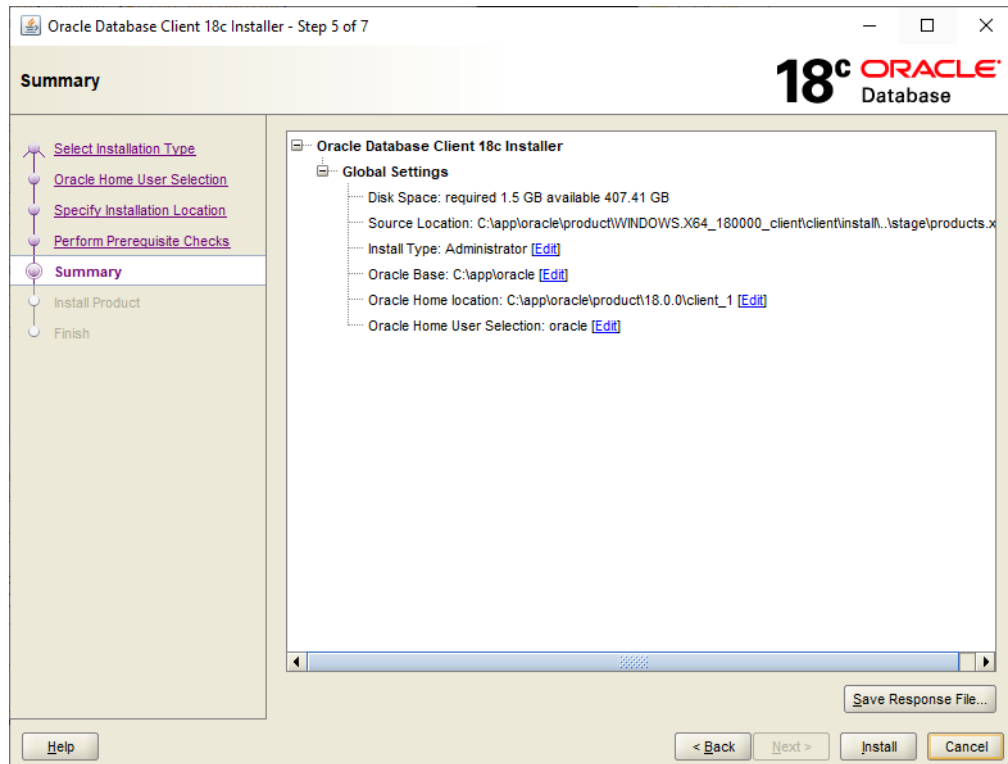
6. The **Download Software Updates** dialog box appears. Make an applicable selection and click **Next**.



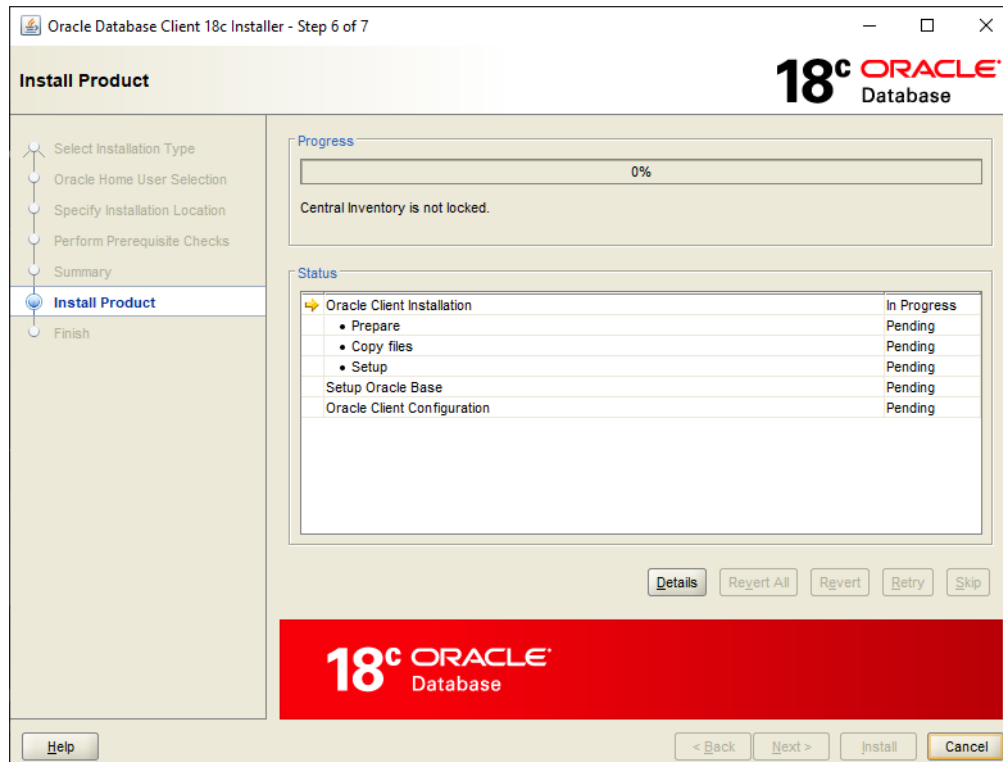
7. The **Specify Installation Location** dialog box appears. Make an applicable selection and click **Next**.



8. The **Perform Prerequisite Checks** dialog box appears. Make an applicable selection and click **Next**.



9. When the prerequisite checks complete, the **Summary** dialog box appears showing a summary of your installation choices. Make applicable changes and click **Install**.



10. When installation completes, click **Close**.

11. Continue with "Edit the **tnsnames.ora** File" below.

Edit the tnsnames.ora File

The **tnsnames.ora** file tells the ETM[®] Server where to find the ETM Database. The **tnsnames.ora** file is in the directory **<ORACLE_HOME>network\admin** and can be edited in a text editor such as Notepad. When the Database is on the same system as the Management Server, the script edits this file. When they are on separate systems, the file must be edited after you install the Oracle Client.

The **tnsnames.ora** file appears similar to the following:

```
ORA18_10.1.1.173 =
  (DESCRIPTION =
    (ADDRESS_LIST =
      (ADDRESS = (PROTOCOL = TCP) (HOST =
        10.1.1.173) (PORT = 1521))
    )
  )
(CONNECT_DATA = (SID = ORA18) (SERVER = DEDICATED))
```

where ORA18 is the database SID, 10.1.1.173 is the IP address of the database host computer, and 1521 is the TCP/IP port used by the Listener.

**Connect with
the ETM[®]
Database
Maintenance
Tool**

To edit the tnsnames.ora file

- Edit the database instance name, IP address, and port number to reflect your database configuration.

You connect to the database with the ETM Database Maintenance Tool to complete database configuration. See the *ETM[®] System Installation Guide* for instructions. The instructions vary depending on whether you are creating a standalone database or a database repository for managed databases.